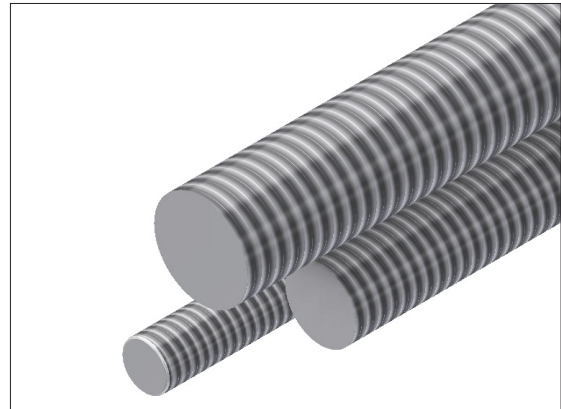


# Threaded Rod / Coupling / Nuts

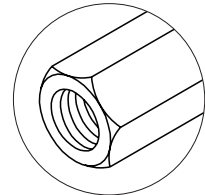
## Threaded Rod

Part Number	Clear Zinc Plated Threaded Rod
TR-1-G	3/8" - 16 x 1'
TR-2-G	3/8" - 16 x 2'
TR-3-G	3/8" - 16 x 3'
TR-4-G	3/8" - 16 x 4'
TR-5-G	3/8" - 16 x 5'
TR-6-G	3/8" - 16 x 6'
TR-8-G	3/8" - 16 x 8'
TR-10-G	3/8" - 16 x 10'
TR-1/2-1-G	1/2" - 13 x 1'
TR-1/2-2-G	1/2" - 13 x 2'
TR-1/2-3-G	1/2" - 13 x 3'
TR-1/2-4-G	1/2" - 13 x 4'
TR-1/2-5-G	1/2" - 13 x 5'
TR-1/2-6-G	1/2" - 13 x 6'
TR-1/2-8-G	1/2" - 13 x 8'
TR-1/2-10-G	1/2" - 13 x 10'
TR-5/8-1-G	5/8" - 11 x 1'
TR-5/8-2-G	5/8" - 11 x 2'
TR-5/8-3-G	5/8" - 11 x 3'
TR-5/8-4-G	5/8" - 11 x 4'
TR-5/8-5-G	5/8" - 11 x 5'
TR-5/8-6-G	5/8" - 11 x 6'
TR-5/8-8-G	5/8" - 11 x 8'
TR-5/8-10-G	5/8" - 11 x 10'



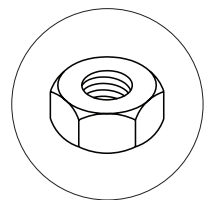
## Rod Coupling

Part Number	Rod Coupling
CM RC-38	3/8"
CM RC-12	1/2"
CM RC-58	5/8"



## Nuts

Part Number	Nuts
CM HN-38	3/8"
CM HN-12	1/2"
CM HN-58	5/8"



Loading based on safety factor 5. Standard Finish: Zinc plated  
 • Bonding jumper not required



**SNAKE TRAY®**

SnakeTray® products are covered by one or more of the following patents: #6637704, #6637165, #6463704, #6460812, #6449912, #6361000, #6347493, #6019323, #6347493, #6449912, #6460812, #5953870, #5839702, #6926236, #7168212, #7959019. Foreign Patents: Australia #737813, #748160, #749488, #776643, #776644. Canada #2251732, #2319624, #2303081, #2396792. Japan #3723224. Mexico #204995, #229386, #220889. Europe #1012938, 1012937. Other Patents Pending.

**CABLE MANAGEMENT, POWER DISTRIBUTION AND ENCLOSURES**

291 SKIP LANE, BAY SHORE, NEW YORK 11706 USA | TEL: 800-308-6788 | 631-674-0004

Document No. MKTG-0190 | Revised August 2020 | © 2020 Snake Tray

**Made in the USA**