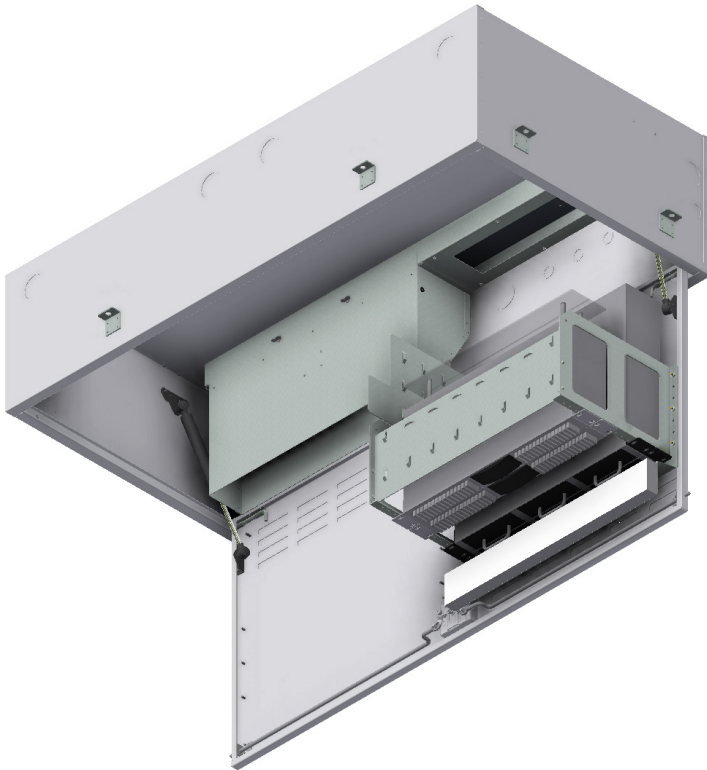


Ceiling Mounted Remote Equipment Cabinet

CM 708-SK-0556



Applications:

Secure consolidation point for distributed network equipment. Lessens the heat load and density in the Telecom Room (TR). Flush mounted, white enclosure installs into a standard 2' x 2' grid ceiling. Architecturally pleasing metal bezel with hinged door complete with vented louvers. Powder coated for seamless integration into any office environment.

Features:

- Designed for Power, Data and Active AV devices in the ceiling
- Multiple size EKO's on all four sides
- Dual mounted 6RU Rack space for active and passive equipment
- Flush mounted lockable keyed pull latch lock
- Constructed from 16 GA galvanized steel
- Louvered removable hinged door
- Two gas assisted struts
- 6 point mounting brackets
- Available with up to 4 - 4 ½" cooling fans and ducted hot air removal system
- Available with integrated power configurations both AC and DC
- Available with Palusol® fire-protection panels
- Available with acoustical foam for added sound mitigation
- Pre-configured and user-configurable versions

Dimensions as Shown

Length	Width	Depth
48"	24"	12"



SNAKE TRAY®

Snake Tray® products are covered by one or more of the following patents: #6637704, #6637165, #6463704, #6460812, #6449912, #6361000, #6347493, #6019323, #6347493, #6449912, #6460812, #5953870, #5839702, #6926236, #7168212, #7959019. Foreign Patents: Australia #737813, #748160, #749488, #776643, #776644. Canada #2251732, #2319624, #2303081, #2396792. Japan #3723224. Mexico #204995, #229386, #220889. Europe #1012938, 1012937. Other Patents Pending.

CABLE MANAGEMENT, POWER DISTRIBUTION AND ENCLOSURES

291 SKIP LANE, BAY SHORE, NEW YORK 11706 USA | TEL: 800-308-6788 | 631-674-0004

Document No. MKTG-0151 | Revised August 2018 | © 2018 Snake Tray

Made in the USA