

# Access Floor Solutions



Cable Management, Power Distribution and Enclosures





## ABOUT US

Snake Tray is a leader in providing solutions in cable management, power distribution and enclosures for access floors to companies and organizations across the globe. Our philosophy is to design and build products that substantially reduce material and construction costs while providing solutions that meet today and tomorrow's demands. With our sales and engineering team, Snake Tray can help customers work through the project to create a plan that is cost effective and sustainable into the future. Our products are all manufactured in the USA and tested to UL, NEMA and TIA/EIA standards.

Snake Tray® products are covered by one or more of the following patents:  
#6637704, #6637165, #6463704, #6460812, #6449912, #6361000, #6347493, #6019323,  
#6347493, #6449912, #6460812, #5953870, #5839702, #6926236, #7168212, #7959019,  
#8783628, #8985530, #8622679, #9074707. Other Patents Pending.





## Snake Tray® is Green and Proudly Powered by the Sun!

Snake Tray is committed to manufacturing products that minimizes the impact on the environment.

We are proud to be the first in our industry to manufacture utilizing solar power from our own roof top solar array. We have streamlined our manufacturing methods and have adopted greener practices including reducing waste, saving energy, and utilizing resources wisely. We stand ready to help building owners, architects and design engineers reach their sustainable building goals.

### Snake Tray® Cable Management

- Made of 100% recycled steel
- Products designed to create no material waste
- Compact shipping and packaging
- US made with distribution centers throughout the USA
- Reusable and 100% reclaimable products

### Snake Bus® and Snake Connect™ Power Distribution

- Consumes less copper resource
- Made of 75% recycled products
- Reusable and reclaimable
- Energy efficient technology
- No material waste (No pipe, wire or vertical cabling)



## Customer List

The following companies and organizations are just a few who have made a commitment to superior cable management and power distribution with Snake Tray systems.

A.G. Edwards  
 ABC TV  
 Aer Lingus  
 Amazon.com  
 American Airlines  
 Amica Insurance  
 AT&T  
 Barclays Bank  
 Bank of America  
 Bloomberg  
 Boeing  
 Bookspan  
 BP  
 Caterpillar  
 CIA  
 CitiBank  
 Coca Cola  
 CS First Boston  
 CVS  
 Department of Homeland Security  
 Deutsche Bank  
 Direct TV  
 Disney  
 Duquesne Light Company  
 Ebay.com  
 EDS  
 Edward Jones  
 EMC  
 Enterprise Rent-A-Car  
 ESPN  
 eSurance  
 Exxon  
 FAA  
 FBI  
 Fox News  
 Federal Reserve Bank  
 Ford Motor Company  
 General Dynamics  
 Google  
 Harvard University  
 Honda  
 HBO  
 IBM  
 Intel Corp.  
 Key Bank  
 Jane Street Capital  
 Johns Hopkins University  
 J.P. Morgan Chase  
 K-Mart  
 Lever Brothers  
 Lockheed Martin  
 MasterCard  
 McDonalds Corporation  
 McGraw Hill  
 Merck  
 Merrill Lynch  
 Met Life  
 Montefiore Medical Center  
 Motorola

NASA  
 National Library of Medicine  
 Netflix  
 New York Stock Exchange  
 North Dakota State University  
 NY City Fire Department  
 PAYCHEX  
 PepsiCo  
 Pfizer  
 Pharmacia & Upjohn Co.  
 Philip Morris  
 PSE&G  
 Puget Sound Naval Shipyard  
 Quest Diagnostics  
 Raytheon  
 Reuters  
 SAIC  
 Siemens  
 Southwestern Bell  
 Sprint  
 Staples



State of North Carolina  
 State of Tennessee  
 State University of New York  
 Target  
 Teachers Insurance Union  
 The Gap  
 The Kennedy Center  
 Travelocity  
 United Health Group  
 United Nations  
 University of Maryland Children's Hospital  
 UPS  
 US Air Force  
 US Army  
 US Coast Guard  
 US Department of State  
 US Marines  
 US Navy  
 US Postal Service  
 Vanderbilt University  
 Vanguard Solar  
 Verizon  
 Wells Fargo  
 World Trade Center  
 Yale University

## Snake Bus® Under Floor Power Distribution



### Pre-Wired 18 KW Power Distribution for Access Floors!

*Enjoy big cost savings with the fastest, most flexible Power Distribution System!*

Snake Bus is a modular power distribution system that offers the most flexibility in power distribution for workstations, call centers, trading floors and data centers.

**Fast:** Traditional methods of hard wiring equipment are eliminated. Snake Bus' pre-configured components allow you to instantly create your power distribution system.

**Energy Efficient:** Snake Bus' innovative bus bar technology is more efficient than traditional copper wire. Bus bar technology experiences less voltage drop which can save on energy consumption.

**Flexible:** Installations, adds, moves and changes are easily done with the Snake Whips (tap offs) that deliver power to individual devices anywhere along the track and can be moved with a 10 second connection.

**Powerful:** Snake Bus' three-phase advantage delivers 50 Amp 3-Phase 208 Volt providing up to 17.5 Kilowatts of power in one easy-to-install track.

**Compatible:** Snake Bus is compatible with all post and panel raised floor systems, as well as low profile access floors.



## Plug-n-Play Bus-bar System with Tap-Off Whip delivers power where you need it!



**Convenient:** Together, Snake Bus feed modules and power track sections are quickly coupled together with the included splice component creating a complete power distribution solution for the raised floor environment. Individual power modules are then attached to the Snake Bus track system making installation and retrofits simple and easy for both large and small scale installations.

**Functional:** Provides both the equipment and isolated earth ground in one single system.

**Sleek:** Snake Bus' slim profile fits in a space less than 2 1/2 inches in height allowing for proper airflow under an access floor. The flexibility of the linear design complements workstation and data center layouts.

**Green:** Snake Bus uses approximately 30% less copper than traditional wiring methods. The system is completely reusable and moveable.



Title 24 Compliant

NRTL Listed to UL 183

## Snake Connect™ Power Distribution



Snake Connect is our newest 4.8 KW power distribution system for access floors. Snake Connect provides a complete line of 20 Amp modular wiring devices for raised floor applications. The ease of use and plug-n-play circular multi-pin connector provides fast installation, easy reconfiguration or relocation of power services and significant labor savings over conventional pipe and wire and other installations. The slim profile allows it to fit in floors as shallow as 1 ½ inches. The connectors are factory assembled and have a positive collar to ensure secure and safe connection. Snake Tray also manufactures a series of floor boxes, furniture interface modules and junction boxes to compliment the system.

- Plug-n-play connectors speed up installations
- Reconfigurations and relocations can be done instantly
- Electrical and datacom configurations can be easily modified
- Round connector design can easily pass through circular openings
- Floor boxes and furniture interface modules available to complete the system
- Junction boxes are available to facilitate a wide variety of cabling typographies



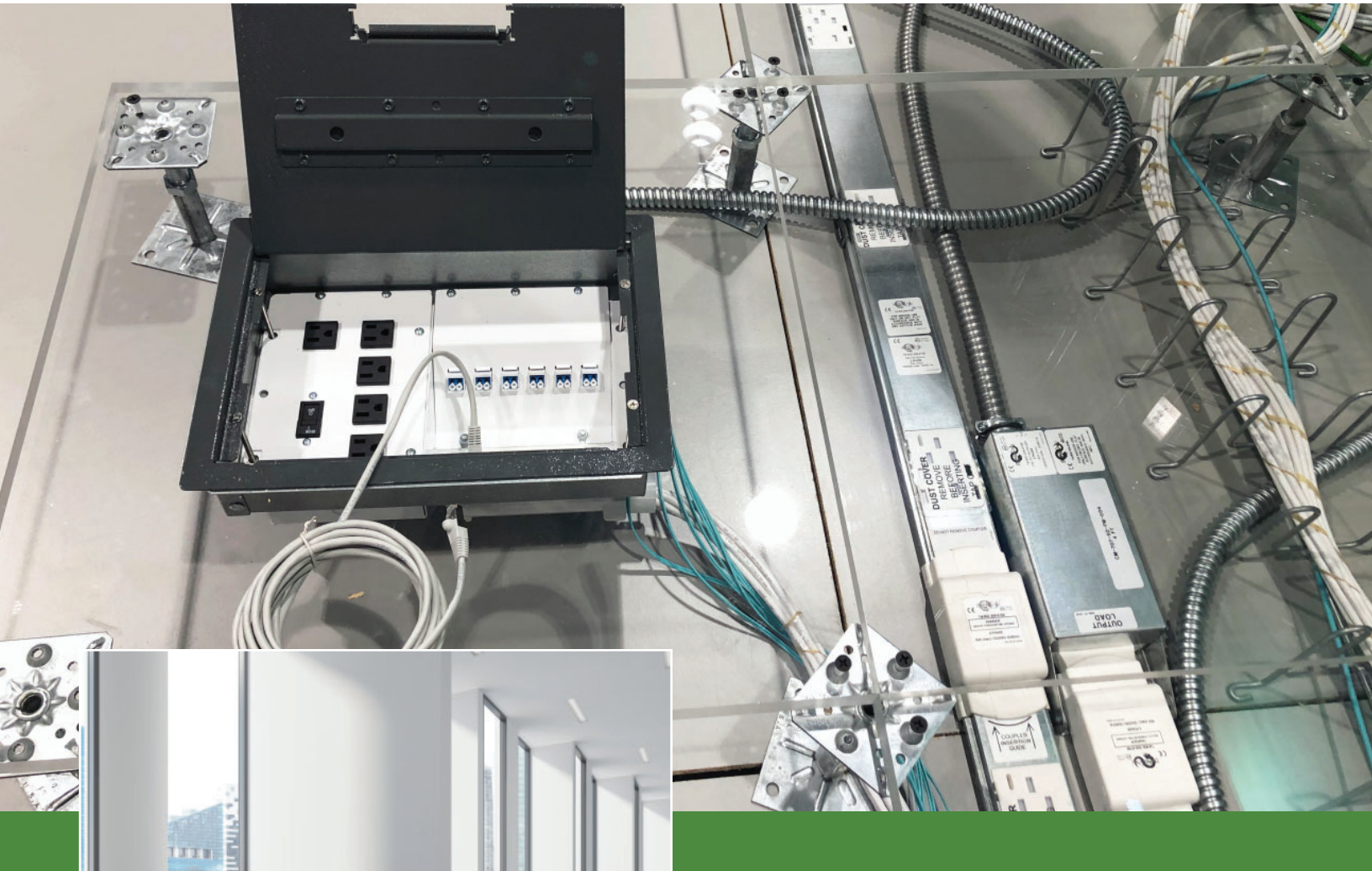
## Snake Tray Manufactured Wiring Systems



Snake Tray designs and builds a series of manufactured wiring systems that give contractors the convenience and speed to complete installations on time and under budget. These devices are ideal for general office environments, trading floors, command and control centers, data centers and hospitality build outs to name a few.

- Eliminates field fabrication
  - Designed at the engineering level for optimum coordination during construction
  - Factory tested for continuity and circuit integrity
  - Listed to UL 183
-

## Snake Connect™ Data Distribution



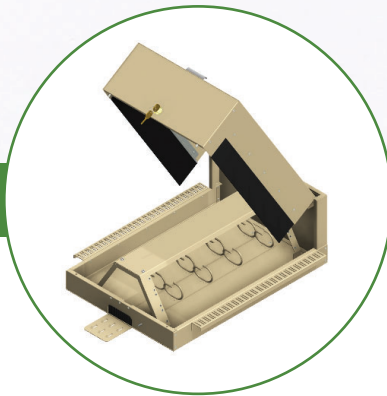
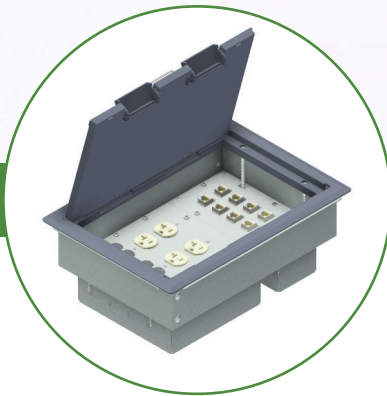
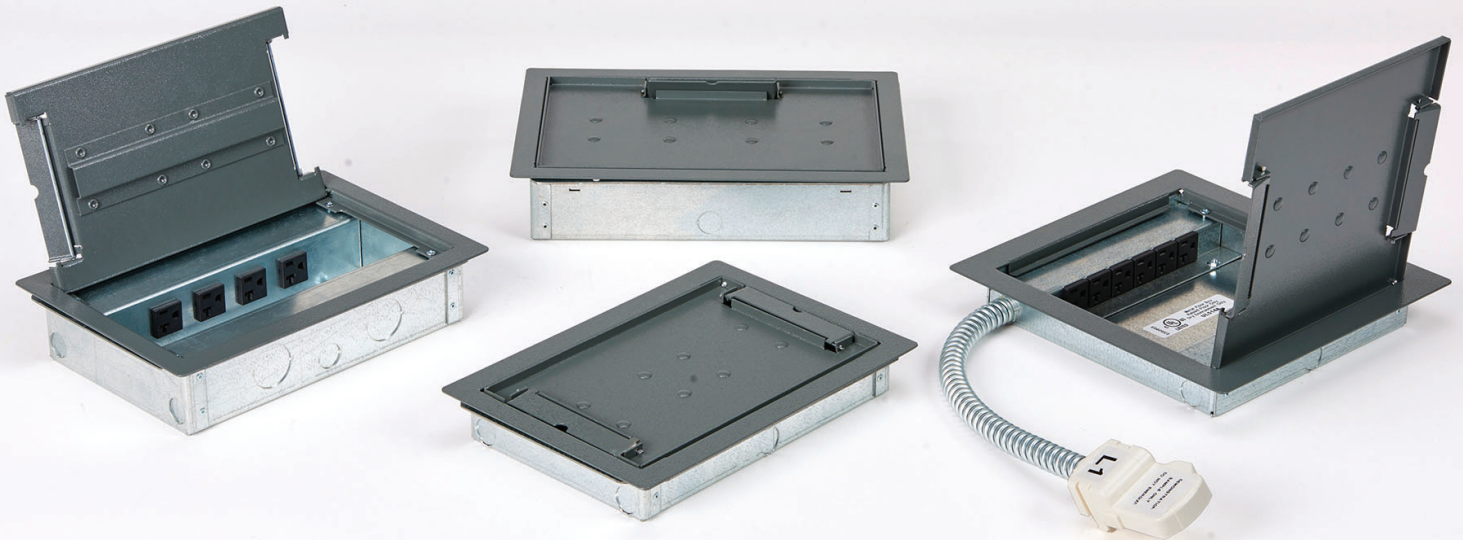
Network drives the critical data, voice, video, and security applications required to support business. Due to ever-changing work spaces, pre-terminated systems allow for quick reconfigurations within the work space, and the open concept office is a perfect example of where pre-terminated cabling solutions work best. The use of pre-terminated cable assemblies provide a plug-n-play solution for the links between the switches, servers, patch panels, and zone distribution areas. These solutions include a variety of trunk cables, array cables, and plug-n-play cassettes that give IT Managers options that suit specific needs.

Pre-terminated cabling can cut installation time by up to 75% over field terminations

- Increases speed in which the project can be completed
- Reduces downtime with faster, more flexible MACs
- Assembles with reusable components for more efficient moves, adds, and changes
- Cuts clean-up time with less material waste
- Eliminates the need for on-site performance testing
- Simplifies the delivery of the network services by providing reliable components that are assembled, tested and certified at the factory (company backed warranty)



## Snake Box™ Enclosure for Access Floors



Snake Tray designs and manufactures a series of enclosures for access floors. Designs include ultra-low profile designs for tight spaces as well power and data distributions enclosures to meet any specifications. Enclosures can be populated with a variety of accessories to create a plug-n-play system that easily integrates with our Snake Bus power distribution system and the computer access floor.

### Features:

- Designed to customer requirements for flexibility and durability
- Multiple AV, power and data configurations are available
- Constructed from 16 GA galvanized steel with flush mount lid design which eliminates tripping hazards
- Powder coated steel covers
- Optional lockable lids
- UL Listed 514A

## Snake Canyon® Modular Cable Tray



Snake Canyon has revolutionized the way cable tray can be installed in computer access floors. Our patented systems can instantly integrate with the access floor to create the fastest installing system in today's market.

### Benefits

- Patented modular system integrates with the structural elements of an access floor
- Installs in any brand or model access floor either in existing or new installations
- No complicated hardware required
- No fabrication of the cable tray required
- Trays can be moved and reused
- Creates an ergonomic pathway for safe and easy access
- Half basket designs are available to allow for easy access below the cable path
- Trays nest together for compact and cost effective shipping and material handling
- Open architecture for easy loading of cable
- Snake Canyon can be accessorized with power modules for convenient under floor power
- Complies with any floor manufacturers' warranties



## 101 Series Snake Tray® Hand Bendable Cable Tray



The 101 series Snake Tray is designed for installation below a raised floor and as a riser along vertical surfaces. Available in several sizes, the 101 series tray can accommodate up to 84 square inches of cable path or 860 data cables. Support legs and mounting rings are pre-formed into the tray and require no additional brackets to install. Custom sizes available.

Snake Tray's patented hand bendable design allows installers to create turns in 10 seconds versus 20 minutes with wire mesh cable tray. Our hand bendable design combined with Snake Tray's built-in mounting hardware gives Snake Tray the installation cost saving advantage over any other cable tray system in today's market!

- Patented hand bendable design goes around any obstacle in a building (no field fabrication required)
- Built-in hanging hardware
- Simple connection that creates both mechanical and electrical bond
- Suspends and mounts from a single point
- Trays nest together for compact and cost effective material handling and shipping
- Open architecture allows for easy loading of cable



## THE SNAKE TRAY ADVANTAGE

Snake Tray has revolutionized cable management, power distribution and enclosures with a variety of innovative products designed to install quickly, reduce labor and material costs, and significantly drive down the total cost of construction. All of our products are made in the USA and stocked throughout the USA to ship on time for our customers. Our engineers and sales team stand ready to assist you with take offs, bill of materials and product solutions. Call us at 800-308-6788 to discuss your next project.



Snake Tray® Headquarters  
291 Skip Lane | Bay Shore NY 11706 | USA  
T: 800-308-6788 | 631-674-0004  
Regional Operations: Chicago | Dallas | Reno  
[www.snaketray.com](http://www.snaketray.com) | MADE IN USA

Document No. MKTG-0165 | May 2019 | © 2019 Snake Tray