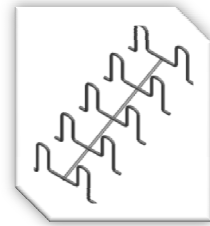




# REVIT CONTENT GUIDE

**Manufacturer** : SNAKE TRAY  
**Description** : 101 SERIES SNAKE TRAY-STRAIGHT SECTION  
**File** :  
**Type Catalog** :  
**Rendering file** :  
**Schedule File** :



**Properties**

Snake Tray 101 Series-Straight Section  
3"x3.5"

Cable Tray Fittings (1) [Edit Type](#)

**Constraints**

Level: Level 1  
Host: Level: Level 1  
Offset: 0' 0"

**Graphics**

Use Annotation Scale: ☐

**Dimensions**

Width: 0' 3"  
Reference Length: 1' 8"  
Length: 1' 4"  
Height: 0' 5"  
Depth: 0' 3 1/2"  
Rung Height:  
Rung Width:  
Rung Space:  
Thickness:  
Size: 3"x3 1/2"-3"x3 1/2"  
OffsetHeight:  
OffsetWidth:

**Identity Data**

Number Of Segment: 1  
Service Type:  
Comments:  
Mark: 3

**Phasing**

Phase Created: New Construction  
Phase Demolished: None

**Other**

Rung Number: 5

[Properties help](#) [Apply](#)

**Type Properties**

Family: Snake Tray 101 Series-Straight Section [Load...](#)  
Type: 3"x3.5" [Duplicate...](#) [Rename...](#)

**Type Parameters**

Parameter	Value
<b>Materials and Finishes</b>	
Material	Snake Cable Tray
<b>Electrical</b>	
Cable Capacity	80
<b>Dimensions</b>	
Outside Width	0' 7 1/4"
Inside Width	0' 3"
Height	0' 5"
Depth	0' 3 1/2"
Connector Depth	0' 1 23/32"
<b>Identity Data</b>	
Type Mark	PX
Part Number	CM101-3-8
Description	SNAKETRAY 101 3"x3.5"
Keynote	
Model	
Manufacturer	
Type Comments	
URL	
Assembly Description	
Assembly Code	
Type Mark	
Cost	
OmniClass Number	
OmniClass Title	

[<< Preview](#) [OK](#) [Cancel](#) [Apply](#)

For drawings of specific models, additional sizes or accessories please call us at 800.308.6788



Snake Tray® products are covered by one or more of the following patents: #6637704, #6637165, #5463704, #6460812, #6449912, #6361000, #6347493, #6019323, #6347493, #6449912, #6460812, #5953870, #5839702, #6926236, #7168212, #7959019. Foreign Patents: Australia #737813, #748160, #749488, #776643, #776644. Canada #2251732, #2319624, #2303081, #2396792. Japan #3723224. Mexico #204995, #229386, #220889. Europe #1012938, 1012937. Other Patents Pending.

**CABLE MANAGEMENT SOLUTIONS, INC.**

**CABLE MANAGEMENT AND POWER DISTRIBUTION**

291 SKIP LANE ♦ BAY SHORE, NEW YORK 11706 USA ♦ TEL: (800)308-6788 (631)674-0004

**Made in the USA**



### **Loading and placing into the Project:**

The Snake Tray family file is supplied and can be loaded into a Revit project through traditional methods. The family is Level based to be easily placed into compatible components. It is suggested that any supporting elements (i.e. Wall, Racks, Cabinets, etc....) be placed into the project before inserting the Snake tray. Compatible components will allow the snake tray to snap into place. When inserting the family, make sure that the sub-category is visible within the active view by checking its visual graphics settings under the category “*Cable Tray Fitting*”. This option might have to be repeated on other views such as the South, North or Ref. Level views.

### **Project Behavior:**

#### **Instance Parameters:**

For this Snake Tray family, *Rung Number* is Instance Parameter.

#### **Type Parameters:**

No configuration parameters exist. No type parameters should be modified as they pertain to actual product specification data. The family contains a total of seven (7) types.

Each type represents a manufactured product. Therefore, the type parameters should not be modified.

Please note:

- € Product Documentation Link – Directs a webpage to the products online listing.
- € Equipment Abbreviation – For tagging each placed type.

#### **Visibility:**

Because of the simplistic nature of the element, geometry is same in plan views for coarse, medium and fine level.

#### **Connectors:**

Cable Tray connectors exist in the model.

#### **Rendering:**

When the family file is loaded into the project, standard Snake tray materials are imported. These may be modified by the user, though ensure that the proper checkbox is select to match the material of choice.

For drawings of specific models, additional sizes or accessories please call us at 800.308.6788



Snake Tray® products are covered by one or more of the following patents: #6637704, #6637165, #5463704, #6460812, #6449912, #6361000, #6347493, #6019323, #6347493, #6449912, #6460812, #5953870, #5839702, #6926236, #7168212, #7959019. Foreign Patents: Australia #737813, #748160, #749488, #776643, #776644. Canada #2251732, #2319624, #2303081, #2396792. Japan #3723224. Mexico #204995, #229386, #220889. Europe #1012938, 1012937. Other Patents Pending.

**CABLE MANAGEMENT SOLUTIONS, INC.**

**CABLE MANAGEMENT AND POWER DISTRIBUTION**

291 SKIP LANE ♦ BAY SHORE, NEW YORK 11706 USA ♦ TEL: (800)308-6788 (631)674-0004

**Made in the USA**



## Scheduling & BOM creation:

<Cable Tray Fitting Schedule>												
A	B	C	D	E	F	G	H	I	J	K	L	
Bend or	Bend	Cable C	Depth	Description	Family	Family and Type	Length	Number Of Segment	Part Number	Rung Nu	URL	T
		80	0' - 3 1/2"	SNAKETRAYS 101 3"x3.5"	Snake Tray 101 Series-Straight Section	Snake Tray 101	1' - 4"	1	CM 101-3-8	5		3"x3.5
		215	0' - 3 1/2"	SNAKETRAYS 101 6"x3.5"	Snake Tray 101 Series-Straight Section	Snake Tray 101	1' - 8"	1	CM 101-6-8	6		6"x3.5
		280	0' - 2 1/2"	SNAKETRAYS 101 12"x2.5"	Snake Tray 101 Series-Straight Section	Snake Tray 101	10' - 0"	1	CM 101-12-8LS	31		12"x2.5
		430	0' - 3 1/2"	SNAKETRAYS 101 12"x3.5"	Snake Tray 101 Series-Straight Section	Snake Tray 101	1' - 4"	1	CM 101-12-8	5		12"x3.5
		480	0' - 4"	SNAKETRAYS 101 12"x4"	Snake Tray 101 Series-Straight Section	Snake Tray 101	1' - 4"	1	CM 101-4-12-8	5		12"x4"
		740	0' - 4"	SNAKETRAYS 101 18"x4"	Snake Tray 101 Series-Straight Section	Snake Tray 101	1' - 4"	1	CM 101-18-8	5		18"x4"
		860	0' - 4"	SNAKETRAYS 101 21"x4"	Snake Tray 101 Series-Straight Section	Snake Tray 101	1' - 4"	1	CM 101-4-21-8	5		21"x4"
Fitting	2"		0' - 2"	SNAKETRAYS 801 90 DEG 2"	Snake Tray 801 Series - 90° Turns	Snake Tray 801	0' - 6"		CM 801-2-6-90	6		2"DX6
Fitting	2"		0' - 2"	SNAKETRAYS 801 90 DEG 2"	Snake Tray 801 Series - 90° Turns	Snake Tray 801	1' - 6"		CM 801-2-18-9	6		2"DX1
		92	0' - 3"	SNAKETRAYS 201 3"x3"	Snake Tray 201 Series	Snake Tray 201	5' - 0"	1	CM 201-3-8	16		3"x3"
		250	0' - 4"	SNAKETRAYS 201 4"x6"	Snake Tray 201 Series	Snake Tray 201	1' - 8"	1	CM 201-6-8	6		4"x6"

For drawings of specific models, additional sizes or accessories please call us at 800.308.6788



SnakeTray® products are covered by one or more of the following patents: #6637704, #6637165, #6463704, #6460812, #6449912, #6361000, #6347493, #6019323, #6347493, #6449912, #6460812, #5953870, #5839702, #6926236, #7168212, #7959019. Foreign Patents: Australia #737813, #748160, #749488, #776643, #776644. Canada #2251732, #2319624, #2303081, #2396792. Japan #3723224. Mexico #204995, #229386, #220889. Europe #1012938, 1012937. Other Patents Pending.

**CABLE MANAGEMENT SOLUTIONS, INC.**

**CABLE MANAGEMENT AND POWER DISTRIBUTION**

291 SKIP LANE ♦ BAY SHORE, NEW YORK 11706 USA ♦ TEL: (800)308-6788 (631)674-0004

**Made in the USA**