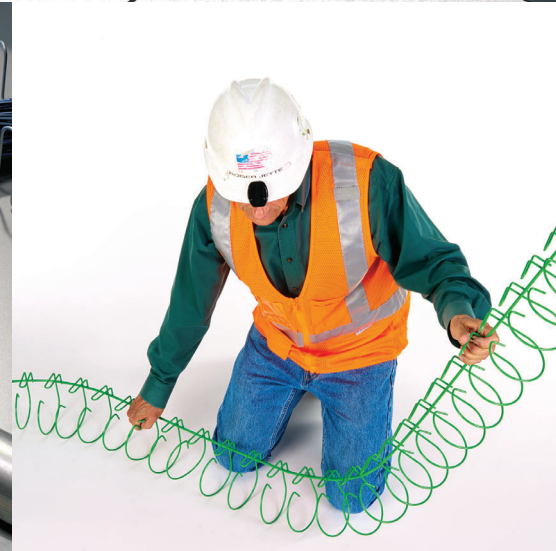
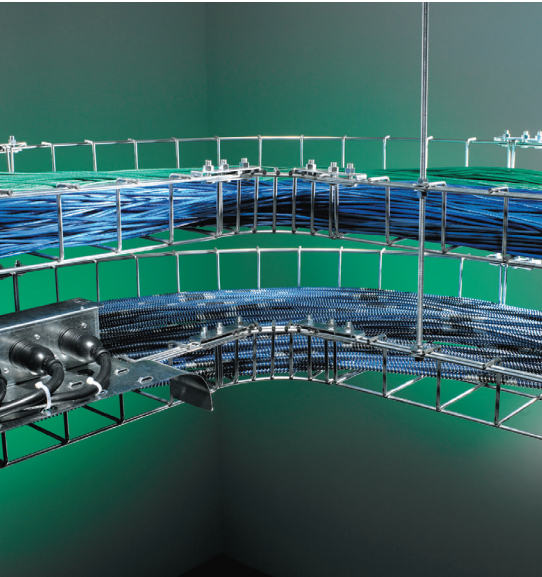


# Cable Management Solutions

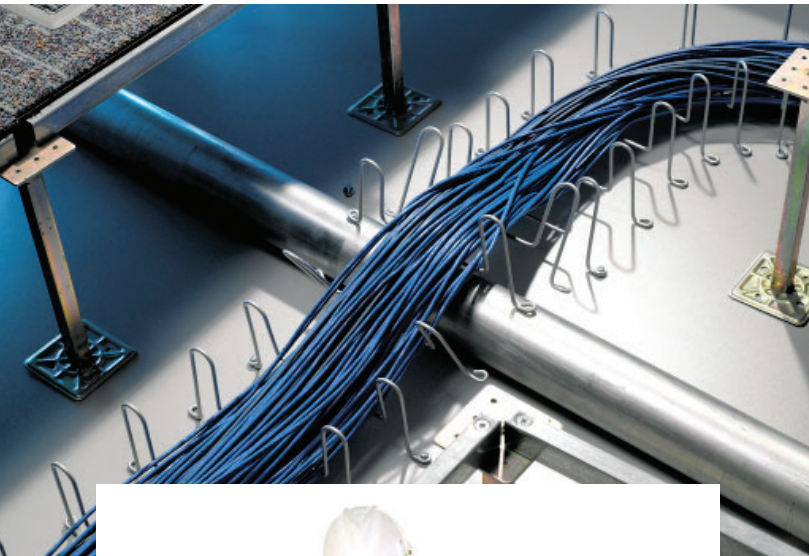


Cable Management, Power Distribution and Enclosures



## SNAKE TRAY®

Hand Bendable Cable Conveyance

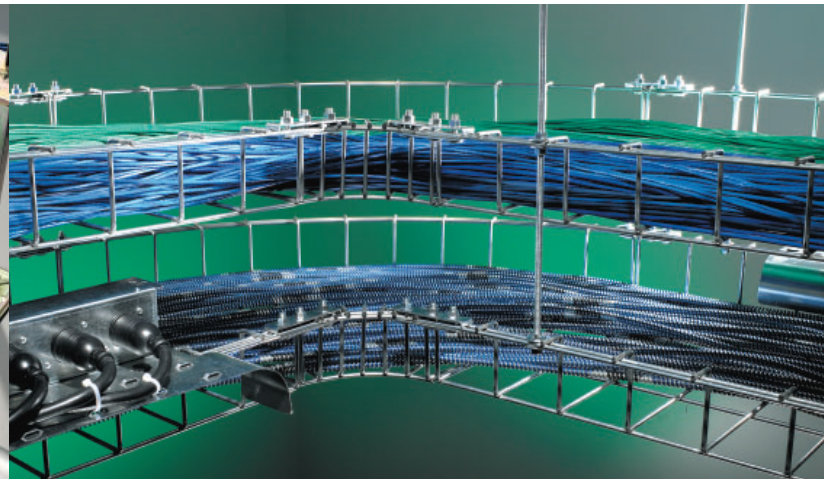


Snake Tray's patented hand bendable design allows installers to create turns in 10 seconds versus 40 minutes with wire mesh cable tray.

- Hand bendable design allows for faster, easier installation with no field fabrication, no additional parts required to complete transitions and no sharp edges to injure the installer or cable (NEC compliant)
- Built-in mounting/hanging hardware reduces cost and no special hardware required
- Single connection in 15 seconds creates mechanical/electrical bond and creates a high frequency drain
- Hangs from a single point, no strut or trapeze required
- Nests together for lower freight costs and less material handling
- Open architecture for quick cable loading

## MEGA SNAKE®

High-Capacity Cable Tray System



Mega Snake's prefabricated design allows crews to complete installations faster and reduce costs by eliminating labor-intensive steps and parts required by all other cable tray systems.

- Built-in suspension system eliminates costly brackets or struts
- Exclusive design connects trays in under a minute - far faster than other cable trays
- Eliminates field fabrication of turns, TEE's and cross sections (no cutting required)
- Unique nesting, stackable design reduces shipping and handling costs
- Splice kit maintains a continuous UL Classified electrical bond throughout the system
- Patented rail can be accessorized with electrical boxes, patch panels, wireless distribution boxes etc.
- Rated to handle 150# per linear foot, the strongest in the industry!

## SNAKE CANYON®

Modular Cable Tray for Access Floors



Snake Canyon has revolutionized the way cables can be installed in computer access floors. This modular cable tray system instantly integrates with the existing structural elements of an access floor to create the fastest way to install under-floor cable tray.

- Over 30% less labor to install when compared to other methods
- No additional hardware or mounting legs required to purchase, engineer, or ship
- Interfaces with all 2' x 2' access floor grids
- Integrates with floor for strength and durability
- Maintains proper air flow under the floor
- Brings cable plant to the surface for easy access
- Reusable to accommodate design changes
- Half section and cantilever designs available

## SNAKE-LOC CABLE HANGER



Quickly top load the cables directly into this light weight double pocket hanger with a squeeze lock feature that quickly attaches onto the messenger wire and stays in place. Significantly reduces time and labor by requiring no tools.

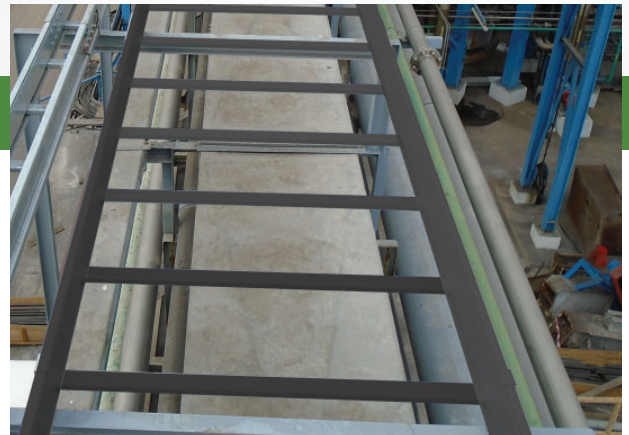
- Squeeze lock into place
- Dual pocket cable paths
- All weather finish for indoor and outdoor installations
- 3" and 5" sizes available

## ALUMINUM TRAY

Lightweight Construction, High Capacity

## CABLE RUNWAY

All Steel Construction for High Capacity



Snake Tray offers NEMA rated Aluminum Cable Tray, which is lightweight for easier installation while offering a high loading capacity to manage large cable runs. Components are easy to attach with our quick connection system.

- Lightweight aluminum
- High loading capacity to handle large cable runs
- Easy connection system
- Great for industrial and outside plant installations
- UL Classified

Snake Tray offers steel cable runway for high capacity applications in data centers, telecommunication rooms and any highly cabled facility. Our steel cable runway system is manufactured with structural quality steel to offer a high strength cable tray solution.

- All steel design for maximum strength
- Allows for easy entrance and exit of cables
- Great for telecommunication rooms and industrial applications
- UL Classified

### Superior Finishes for all Snake Tray cable management products include:

Pre-galvanized, stainless steel and powder coated on-site at our state-of-the-art facility.

Snake Tray® products are covered by one or more of the following patents: #5839702, #5953870, #6019323, #6347493, #6361000, #6449912, #6460812, #6463704, #6637165, #6637704, #6926236, #7168212, #7959019, #8622679, #8783628, #8985530, #8985530 B2, #9074707, #10225947, #10225947 B2, #10666029, #10666029 B2, #10944355 B2, #11271519 B2, #20180313469 A1, #20180317336 A1, #20190229507, #2020030461, #20200403390, #20210126445 A1, #20210194419 A1, #20210336430 A1, #20220112969, #20220221174. Foreign Patents: Australia #737813, #748160, #749488, #776643, #776644. Canada #2251732, #2319624, #2303081, #2396792. Japan #3723224. Mexico #204995, #229386, #220889. Europe #1012938, #1012937. Other Patents Pending.

## About Us

Snake Tray has been innovating cable management, power distribution and enclosure solutions since 1996. Our goal is to provide our customers with cost-effective solutions that substantially reduce the total cost of construction. Snake Tray products are stocked throughout the US to guarantee no delays to our customers. Our 24-hour technical support gives customers the opportunity to speak with us at any time to discuss a project. We welcome the opportunity to provide innovative solutions that help your projects install faster.



## Snake Tray® is Green and Proudly Powered by the Sun!

We are proud to be the first in our industry to manufacture utilizing solar power from our own roof top solar array. We have streamlined our manufacturing methods and have adopted greener practices including reducing waste, saving energy and utilizing resources wisely. We stand ready to help building owners, architects and design engineers reach their sustainable building goals.

Snake Tray is committed to manufacturing products that minimize the impact on the environment.

- Made of 100% recycled steel
- Products designed to create no material waste
- Compact shipping and packaging
- USA made with distribution centers throughout the USA
- Reusable and 100% reclaimable products

## Customer List

The following companies and organizations are just a few who have made a commitment to superior cable management and power distribution with Snake Tray systems.

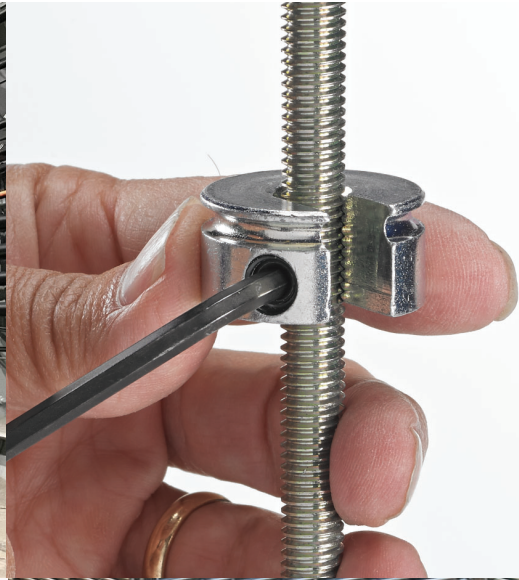
A.G. Edwards  
ABC  
Aer Lingus  
Amazon  
American Airlines  
Amica Insurance  
AT&T  
Barclays Bank  
Bank of America  
Big Shine Solar Energy  
BlackRock  
Bloomberg  
Boeing  
Bookspan



BP  
Buffalo Solar  
Catalyze  
Catamount Solar  
Caterpillar  
CIA  
CitiBank  
Cherry Street Energy  
Chicago Transit Authority  
Clēnera  
Coca Cola  
Columbia Gas  
Columbia University  
ConEdison  
Cornell University  
CS Energy  
CS First Boston  
CVS  
CyrusOne  
DC BLOX  
Dept of Homeland Security  
Deutsche Bank  
DirecTV  
Disney  
Duquesne Light Company  
Ebay.com  
Ecovis Inc.  
EDF Renewables  
EDS  
Edward Jones  
EMC Insurance  
Enable Energy  
Enterprise Rent-A-Car  
Envinity  
ESPN  
eSurance  
Exxon

FAA  
First Solar  
FBI  
Federal Reserve Bank  
Ford Motor Company  
General Dynamics  
Google  
Got Electric LLC  
Hannah Solar Government Services  
Harvard University  
Harvest Power  
Helix Electric  
Herzog  
Honda  
HSI Solar  
IBM  
Independent Energy  
Intel Corp  
Kern Solar Structures  
Key Bank  
Keyes European Solar  
Jane Street Capital  
Johns Hopkins University  
J.P. Morgan Chase  
Jurchen Technology  
K-Mart  
Lever Brothers  
Lion Electric  
London Underground  
Lucas Museum Of Narrative Art  
MasterCard  
Massachusetts Bay Transit Authority  
McDonalds Corporation  
McGraw Hill  
Merck  
Merrill Lynch  
MetLife  
Metropolitan Transit Authority  
Monarch Electric  
Montefiore Medical Center  
Motorola  
MYR Energy Services  
NASA  
National Library of Medicine  
NBC  
Netflix  
New Jersey Transit  
New York Stock Exchange  
North Dakota State University  
Northrop Grumman  
NY City Fire Department  
Ocean Solar  
Orbital Solar Services  
O'Hare Intl. Airport  
Paradise Energy Solutions  
PAYCHEX  
PEG Systems  
PepsiCo  
Pfizer  
Pharmacia & Upjohn  
Philip Morris

Picktricity  
Pivot Energy  
Progeneration Energy  
Progressive  
PSE&G  
Puget Sound Naval Shipyard  
Quest Diagnostics  
Raytheon  
RENU Energy Solutions  
ReVision Energy  
SAIC  
Siemens  
Sky Fire Energy  
Solar Speed Rack  
Solscient Energy  
Southwestern Bell  
Speir Innovations  
Sprint  
Spreck Energy  
Standard Solar  
Staples  
State of North Carolina  
State of Tennessee  
State University of New York  
Strata Solar  
Sun Power  
Sunation Solar  
Sun Tribe  
Target  
The Gap  
The Kennedy Center  
3M  
TIAA  
Toronto Transit  
Tosco Refining Company  
Travelocity  
Union Pacific  
United Health Group  
United Nations  
United Renewable Energy  
University of Maryland  
Children's Hospital  
UPS  
US Air Force  
US Army  
US Corps of Engineers  
US Coast Guard  
US Department of State  
US Department of Transportation  
US House of Representatives  
US Marines  
Vanderbilt University  
Vanguard Solar  
Verizon  
Walmart  
Washington Metro Transit Authority  
Wells Fargo  
Werner Electric  
World Trade Center  
WTEC Energy  
Yale University



## THE SNAKE TRAY® ADVANTAGE

Snake Tray has revolutionized cable management, power distribution and enclosures with a variety of innovative products designed to install quickly, reduce labor and material costs, and significantly drive down the total cost of construction. All of our products are made in the USA and stocked throughout the USA to ship on time for our customers. Our engineers and sales team stand ready to assist you with take offs, bill of materials and product solutions. Call us at 800-308-6788 to discuss your next project.



Snake Tray®  
291 Skip Lane | Bay Shore NY 11706 | USA  
T: 800-308-6788 | 631-674-0004  
F: 800-881-6641 | 631-674-0010  
[www.snaketray.com](http://www.snaketray.com) | MADE IN USA  
Document No. MKTG-0008 | January 2024 | © 2024 Snake Tray