

# Snake Tray<sup>®</sup> Cable Management



Hand Bendable Cable Tray for Under Floors, Overhead and Walls



# Snake Tray<sup>®</sup>

No cutting. No clipping. No kidding!

*With Snake Tray the only thing you will ever cut is your construction costs!*

Snake Tray's patented hand bendable design allows installers to create turns in 10 seconds versus 20 minutes with wire mesh cable tray. Our hand bendable design combined with Snake Tray's built-in mounting hardware gives Snake Tray the installation cost saving advantage over any other cable tray system in today's market!

## Just Bend It

- Faster, easier installation with no field fabrication
- No additional parts or tools to buy
- No sharp edges to injure the installer or cable (NEC compliant)

## Built-in Mounting/Hanging Hardware

- Reduces cost, no special hardware required
- Quicker to install

## Single Connection

- Connect trays in just 15 seconds with a single connector bolt
- One connection creates mechanical/electrical bond and creates a high frequency drain

## Hangs from a Single Point

- No strut or trapeze required
- Less labor used

## Trays Nest Together

- Lower freight costs
- Less material handling

## Open Architecture

- Drop-in cable loading

## Superior Finishes

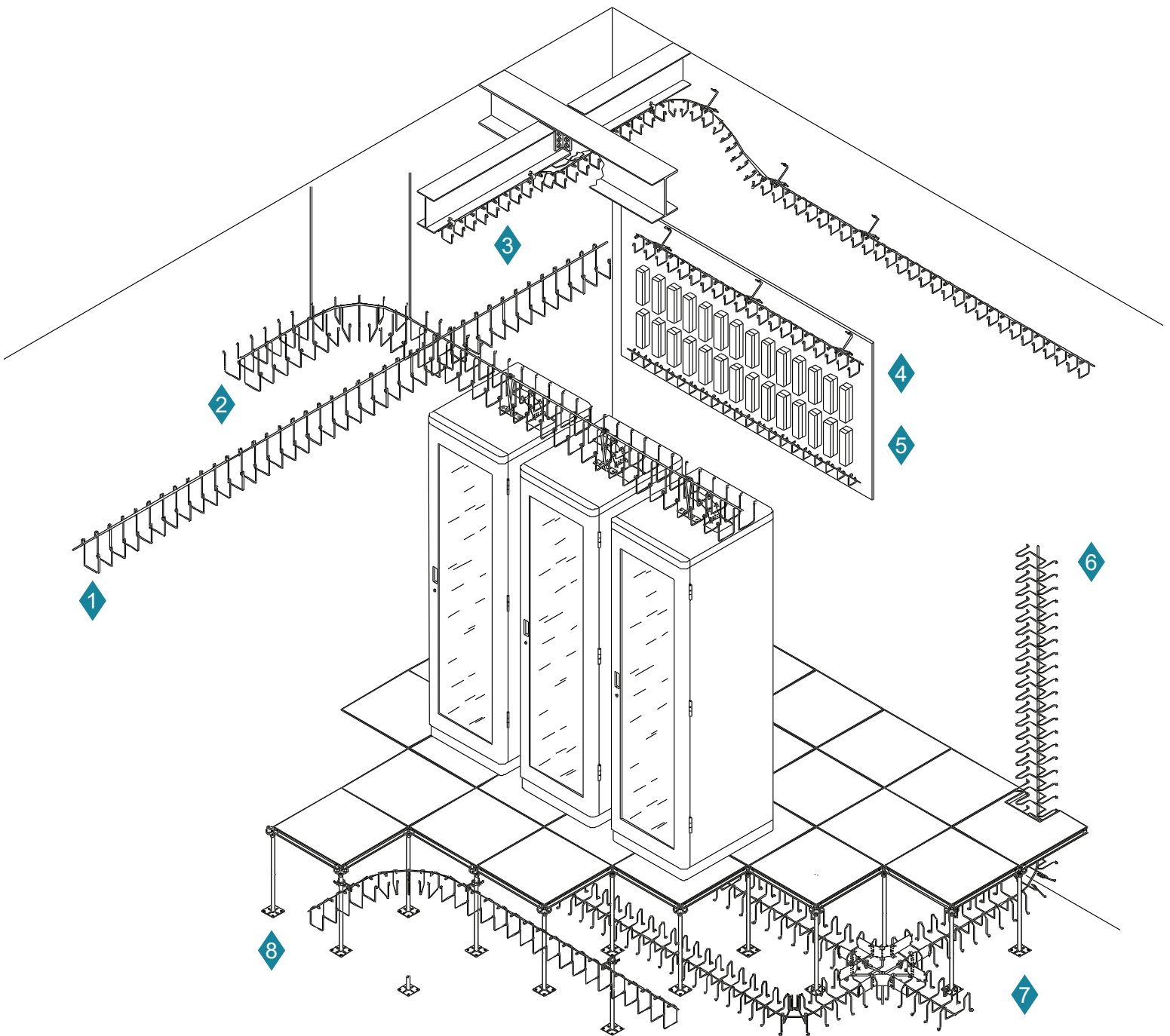
- Snake Tray's unique mechanically applied galvanizing process eliminates the growth of zinc whiskers
- Stainless Steel and Powder Coating also available for all trays

## Quality and Service

- Customer service available 24 hours
- UL and cUL listed (Cable, conduit hardware) for its weight carrying capacity
- EIA/TIA, NEC and NEMA compliant
- Made in the USA



Call the Snake Tray engineering team to assist you with the creation of cable management or power distribution designs, drawing sets, bill of materials, submittals and BIM.



**1-501 Wall Snake Tray**

Instantly installs to the wall without brackets.

**2-201 Snake Tray Double Pocket**

Instantly bends around obstacles and quickly suspends from threaded rod.

**3-Snake Tray single Pocket**

Attaches to building structure with a simple beam clamp.

**4-201 Snake Tray w/ Wall Bracket**

Can transition from the wall and then be suspended from overhead.

**5-401 Snake Race Mini Cable Manager w/ Built-in Mounting Rings**

**6-101 Snake Tray**

Easily transitions from under floor to the wall as a riser.

**7-101 Series Snake Tray**

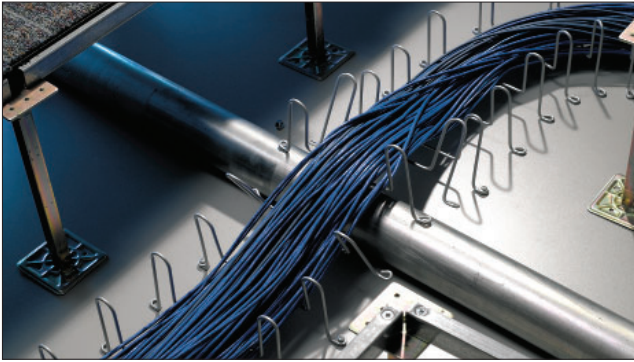
Under floor cable tray bends around obstacles and stands on its built-in mounting foot rings.

**8-201 Snake Tray**

Easily mounts to the floor pedestal and bends around obstacles under the floor.

# Snake Tray® Hand Bendable Cable Tray Series

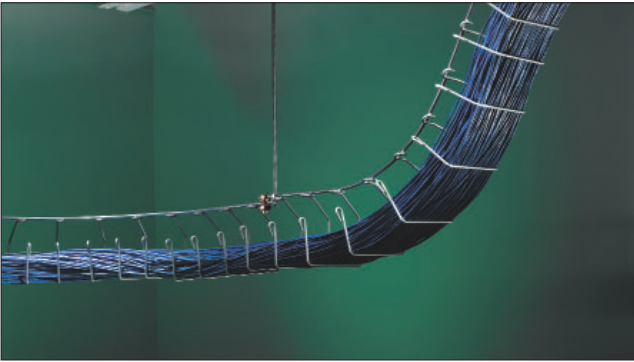
101 Series Snake Tray® — Under floor



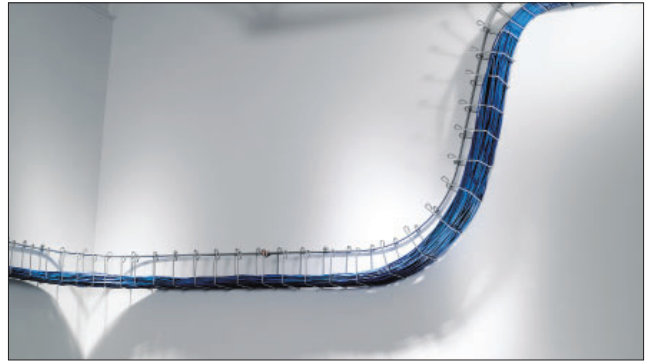
454 Universal Snake Tray® — Overhead/Wall



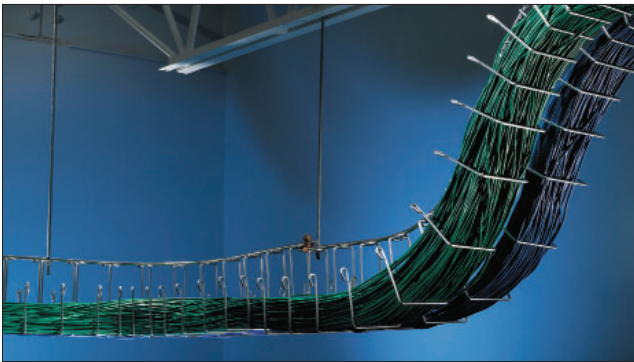
201 Snake Tray® — Overhead/Wall Mount



501 Snake Tray® — Wall Mount



201 Double Snake Tray® — Overhead/Wall Mount



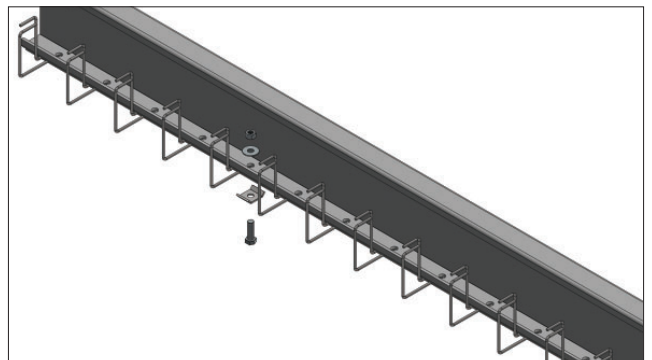
701 MC Snake Tray® — Cable Manager for MC Cable



401 Snake Race — Mini Cable Manager  
Overhead/Wall Mount

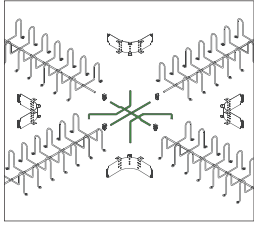


787 Conveyor Snake Tray® — Conveyor Belt Attachments

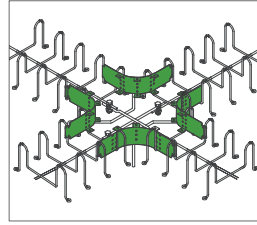


# 101, 201, 401, 454 and 501 Series Accessories

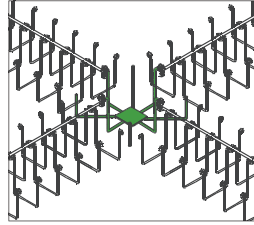
101 Intersections



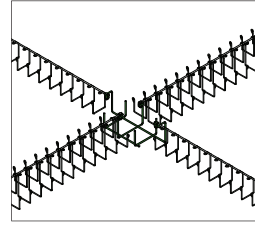
101 Turning Fence



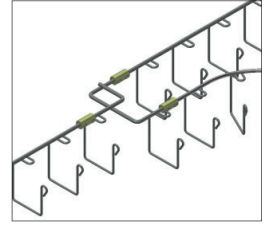
201 Double Intersection



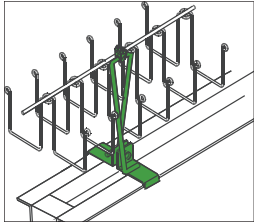
201 Double w/Single Cross Intersection/TEE



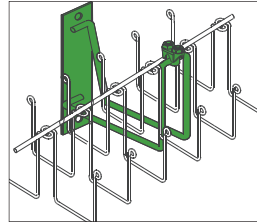
201 WYE Connection



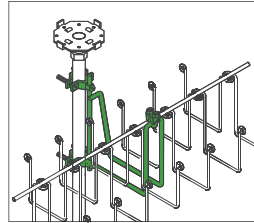
201 Double Rack Mount Bracket



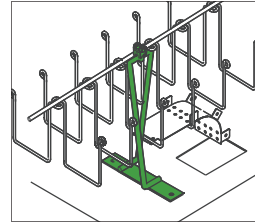
201 Double Wall Mount Bracket



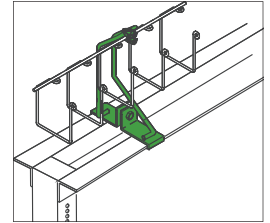
201 Double Pedestal Mount Bracket



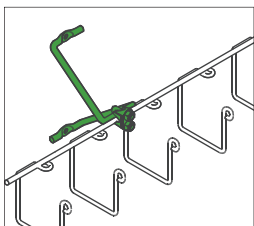
201 Double Cabinet Mount Bracket



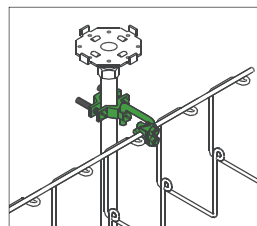
201 Rack Mount Bracket



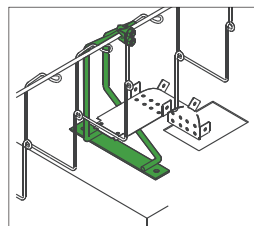
201 Wall Mount Bracket



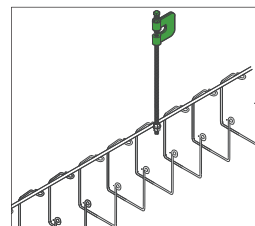
201 Pedestal Mount Bracket



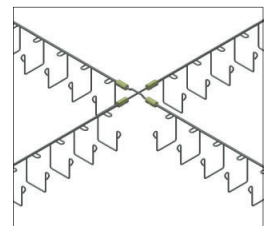
201 Cabinet Mount Bracket



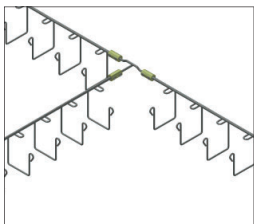
201 and 454 Beam Clamp for 3/8" Threaded Rod



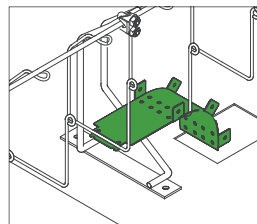
201, 401 and 454 Universal Intersection



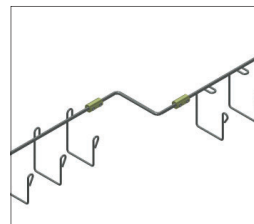
201, 401, 454 and 501 Universal TEE Intersection



201, 401 and 501 Cable Drop-Out Waterfall



201 to 501 Connection Adapter



501 Concrete Anchor

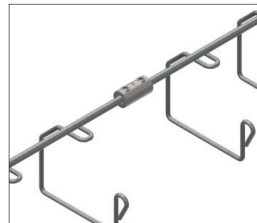


## Hardware

Universal Tray Connector Bolt



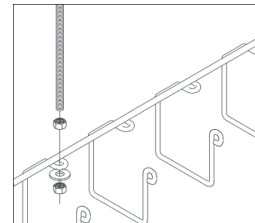
Universal Tray Inline Connector Bolt



Tin Plated Grounding Connector



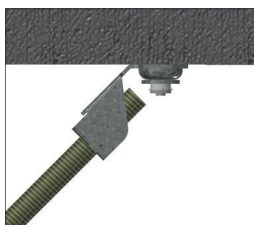
Threaded Rod



Attachment Hardware



Hanger Bracket for Threaded Rod Suspension



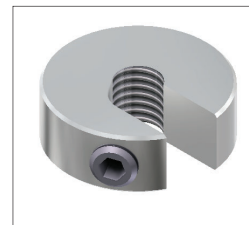
Concrete Wedge Anchor



Concrete Anchor



Snake Nut™ Threaded Rod Fastener





## THE SNAKE TRAY® ADVANTAGE

Snake Tray has revolutionized cable management, power distribution and enclosures with a variety of innovative products designed to install quickly, reduce labor and material costs, and significantly drive down the total cost of construction. All of our products are made in the USA and stocked throughout the USA to ship on time for our customers. Our engineers and sales teams stand ready to assist you with take offs, bill of materials and product solutions. Call us at 800-308-6788 to discuss your next project.



Snake Tray® Headquarters  
291 Skip Lane | Bay Shore NY 11706 | USA  
T: 800-308-6788 | 631-674-0004  
[www.snaketray.com](http://www.snaketray.com) | MADE IN USA

Document No. MKTG-0002 | May 2024 | © Snake Tray

Snake Tray® products are covered by one or more of the following patents: #5839702, #5953870, #6019323, #6347493, #6361000, #6449912, #6460812, #6463704, #6637165, #6637704, #6926236, #7168212, #7959019, #8622679, #8783628, #8985530, #8985530 B2, #9074707, #10225947, #10225947 B2, #10666029, #10666029 B2, #10944355 B2, #11271519 B2, #11929602 B2, #11982467 B2 #20180313469 A1, #20180317336 A1, #20190229507, #2020030461, #20200403390, #20210126445 A1, #20210194419 A1, #20210336430 A1, #20220112969, #20220221174. Foreign Patents: Australia #737813, #748160, #749488, #776643, #776644. Canada #2251732, #2319624, #2303081, #2396792. Japan #3723224. Mexico #204995, #229386, #220889. Europe #1012938, #1012937. Other Patents Pending.