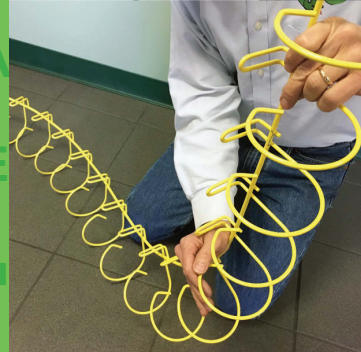
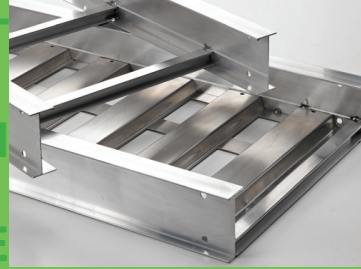




# CABLE MANAGEMENT SOLUTIONS



[SNAKETRAY.COM](http://SNAKETRAY.COM) ■ 1-800-308-6788

# Universal



*Snake Tray has designed the next generation in cable management with a conveyance system that is hand bendable and can be mounted overhead or on walls in one easy-to-install system.*

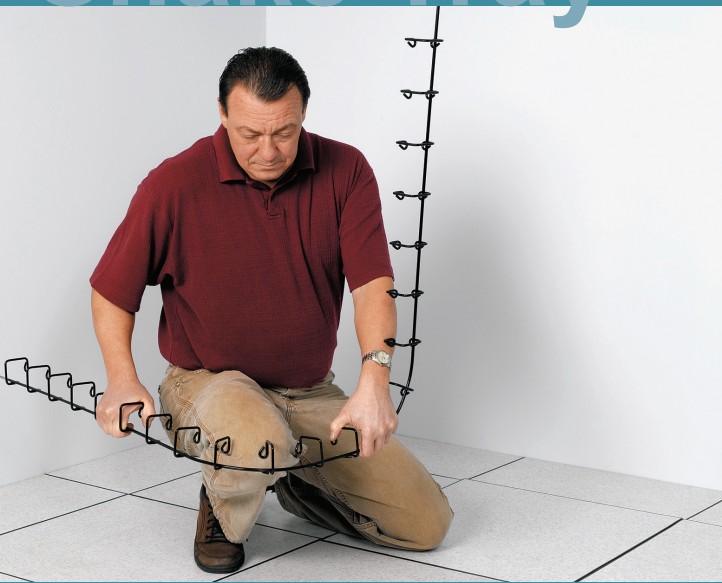
## **UNIVERSAL SNAKE TRAY®**

Hand Bendable, Universal Mounting Cable Tray

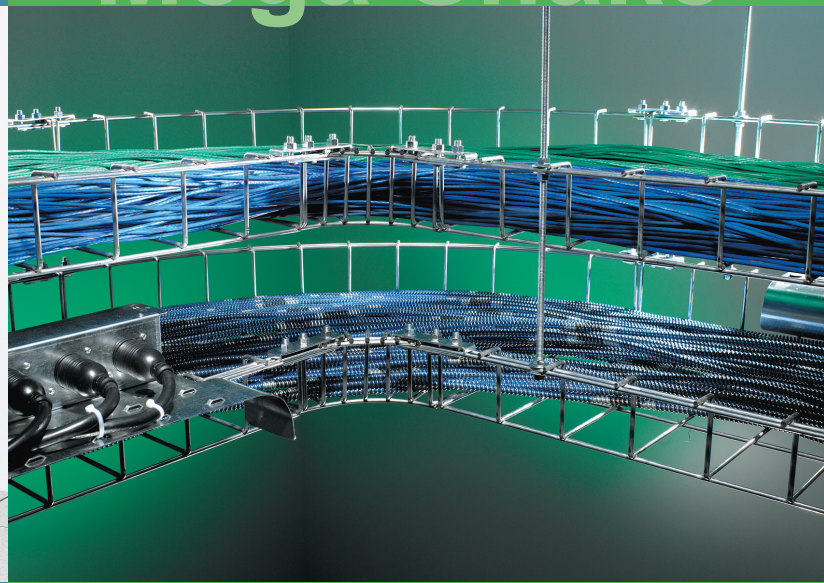
- Hand bendable (No cutting required!)
- Protects and secures both fiber and copper cables in all directional plains
- Maintains the proper bend radius for optimal performance
- Built-in mounting rings can be attached either overhead or on a wall
- Designed for easy pulling or loading cables from the side
- Nests together for low cost shipping and material handling
- Self limiting cable count for code compliant conveyance of power over ethernet systems



# Snake Tray



# Mega Snake

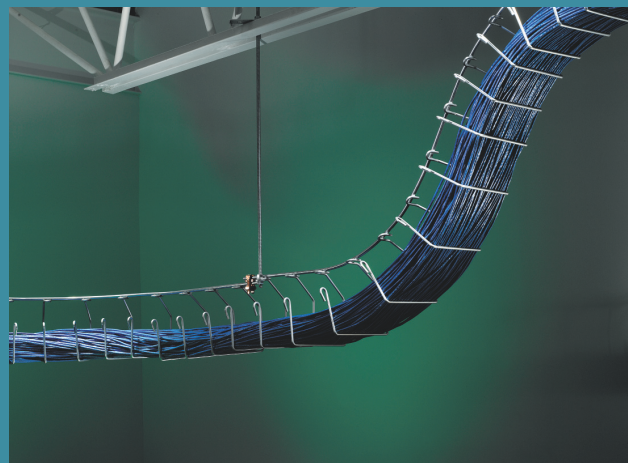


## SNAKE TRAY®

### Hand Bendable Cable Conveyance

Snake Tray's patented hand bendable design allows installers to create turns in 10 seconds versus 40 minutes with wire mesh cable tray.

- Hand bendable design allows for faster, easier installation with no field fabrication, no additional parts required to complete transitions and no sharp edges to injure the installer or cable (NEC compliant)
- Built-in mounting/hanging hardware reduces cost and no special hardware required
- Single connection in 15 seconds creates mechanical/electrical bond and creates a high frequency drain
- Hangs from a single point, no strut or trapeze required
- Nests together for lower freight costs and less material handling
- Open architecture for quick cable loading



## MEGA SNAKE®

### High-Capacity Cable Tray System

Mega Snake's prefabricated design allows crews to complete installations faster and reduce costs by eliminating labor-intensive steps and parts required by all other cable tray systems.

- Built-in suspension system eliminates costly brackets or struts
- Exclusive design connects trays in under one minute - far faster than other cable trays
- Eliminates field fabrication of turns, T's and cross sections (no cutting required)
- Unique nesting, stackable design reduces shipping and handling costs
- Splice kit maintains a continuous electrical bond throughout the system
- Patented rail can be accessorized with electrical boxes, patch panels, wireless distribution boxes etc.
- Rated to handle 150# per foot, the strongest in the industry



# Snake Canyon MC Snake Tray



## Snake Canyon®

Modular Cable Tray for Access Floors

Snake Canyon has revolutionized the way cables can be installed in computer access floors. This modular cable tray system instantly integrates with the existing structural elements of an access floor to create the fastest way to install under-floor cable tray.

- Over 30% less labor to install when compared to other methods
- No additional hardware or mounting legs required to purchase, engineer, or ship
- Interfaces with all 2' x 2' access floor grids
- Integrates with floor for strength and durability
- Maintains proper air flow under the floor
- Brings cable plant to the surface for easy access
- Reusable to accommodate design changes
- Half section and cantilever designs available

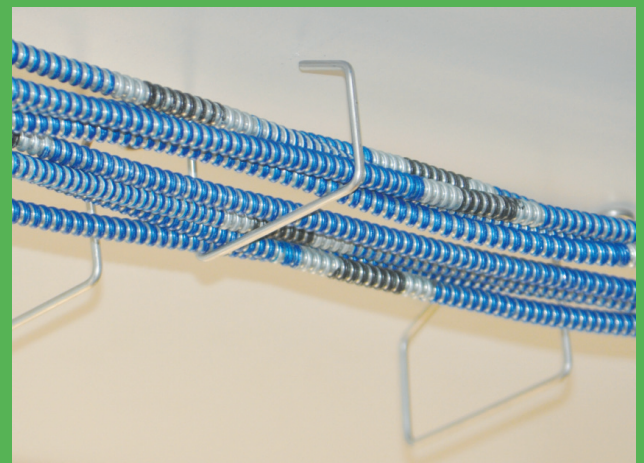


## MC Snake Tray®

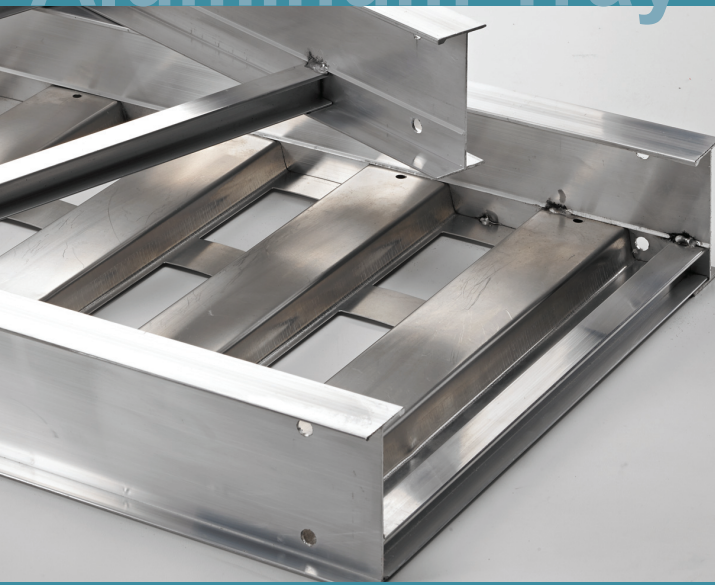
Cable Manager for MC Cables

MC Snake Tray is hand bendable and specifically designed to manage MC cables overhead or on walls. Its patented built-in mounting rings allow for quick installations to concrete decks utilizing a traditional pole gun. Once installed, MC Snake Tray allows for fast installation of MC cables from the ground with Snake Tray's adjustable installation pole.

- Hand bendable to accommodate directional changes and obstacles in the cable pathway
- Trays connect together with single connector
- Built-in mounting rings for quick installation overhead
- Lay MC cables into MC Snake Tray from the ground with an adjustable pole (No ladder required!)
- Trays nest together for easy handling and low cost shipping



# Aluminum Tray



# Cable Runway



## ALUMINUM CABLE TRAY

Lightweight, High Capacity

Snake Tray now offers Aluminum Cable Tray, which are lightweight for easier installation while offering a high loading capacity to manage large cable runs. Components are easy to attach with our quick connection system.

- Light weight aluminum
- High loading capacity to handle large cable runs
- Easy connection system
- Great for industrial and outside plant installations

## CABLE RUNWAY

All Steel Construction for High Capacity

Snake Tray now offers steel cable tray for high capacity applications in data centers, telecommunication rooms and any highly cabled facility. Our steel cable tray system is manufactured with structural quality steel to offer a high strength cable tray solution.

- All steel design for maximum strength
- Allows for easy entrance and exit of cables
- Great for telecommunication rooms and industrial applications

### Superior Finishes for all Snake Tray cable management products include:

Pre-galvanized, stainless steel and powder coating applied on-site at our new state-of-the-art facility.

WWW.SNAKETRAY.COM ■ 1-800-308-6788





AIR FLOW MANAGERS



TRANSIT & TUNNELS



FASTENERS



POWER DISTRIBUTION



ENCLOSURES



SOLAR INSTALLATIONS

DATA CENTERS ■ BANKS ■ HOSPITALS ■

UNIVERSITIES ■ SCHOOLS ■ UTILITIES ■ SOLAR

MILITARY ■ SECURITY ■ GOVERNMENT ■ BANKS

CALL CENTERS ■ INDUSTRIAL ■ MARINE

OIL & GAS ■ BROADCAST ■ RETAIL ■ TECHNOLOGY

SOLAR ■ RAIL ■ CRITICAL FACILITIES ■ AEROSPACE

DATA CENTERS ■ HOSPITALS ■ UNIVERSITIES

SCHOOLS ■ TRANSIT AUTHORITIES ■ UTILITIES

MILITARY ■ SECURITY ■ GOVERNMENT ■ BANKS

CALL CENTERS ■ INDUSTRIAL ■ MARINE ■ OIL & GAS

## THE SNAKE TRAY ADVANTAGE

Snake Tray has revolutionized cable management, power distribution and enclosures with a variety of innovative products designed to install quickly, reduce labor and materials costs, and significantly drive down the total cost of construction. All of our products are made in the USA and stocked throughout the USA to ship on time for our customers. Our engineers and sales team stand ready to assist you with take offs, bill of materials and product solutions. Call us at 800-308-6788 to discuss your next project.



Snake Tray®  
291 Skip Lane | Bay Shore NY 11706 | USA  
T: 800-308-6788 | 631-674-0004  
F: 800-881-6641 | 631-674-0010  
www.snaketray.com | MADE IN USA

Snake Tray® products are covered by one or more of the following patents:  
#6637704, #6637165, #6463704, #6460812, #6449912, #6361000, #6347493, #6019323,  
#6347493, #6449912, #6460812, #5953870, #5839702, #6926236, #7168212, #7959019,  
#8783628, #8985530, #8622679, #9074707. Other Patents Pending.

