

Fiber and Copper SCIF Secured Module

CM-708-SK-0148 (as shown)

Applications:

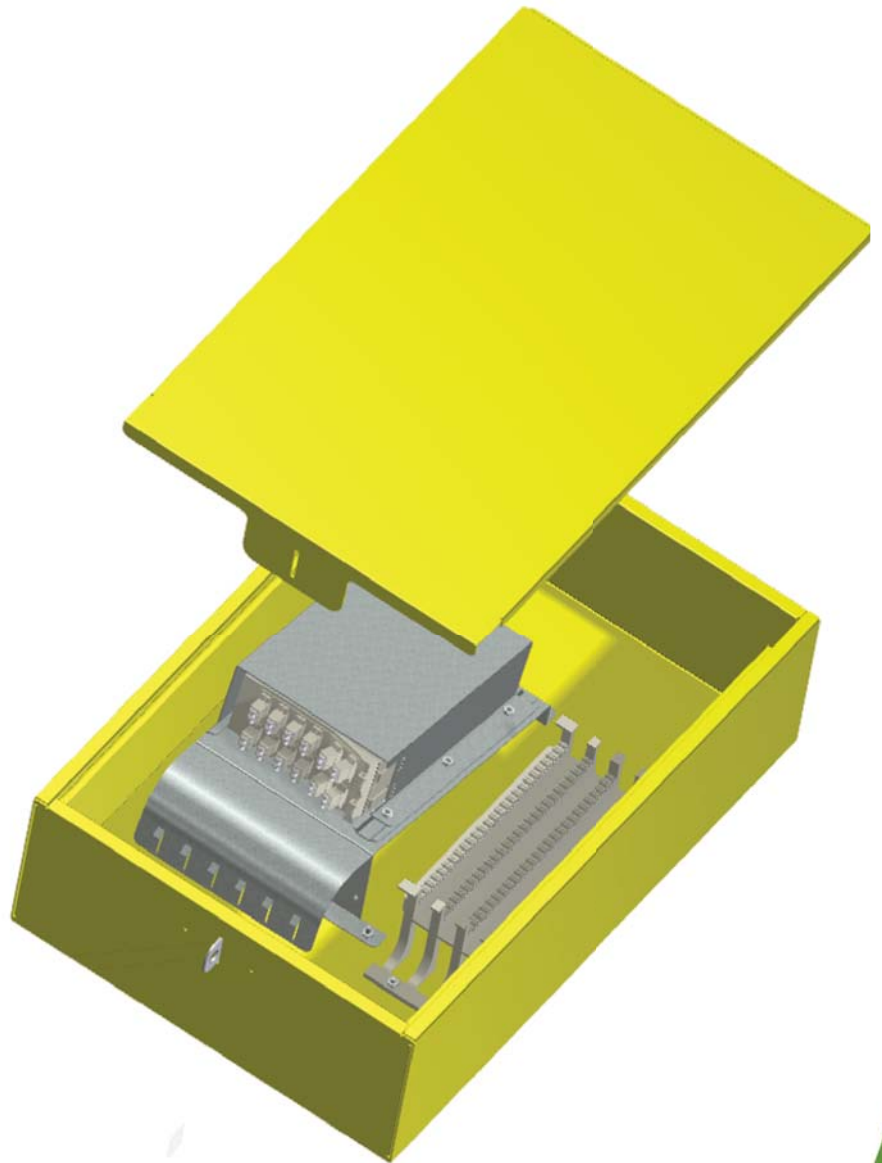
This secure box is designed to house sensitive connections under raised floors. Primarily used in SCIF and other secure venues, this box has a sliding removable cover with integrated padlock hasp. The unique design makes it impossible for entrance unless physically unlocked, keeping out all unwanted personnel. All seams are electronically welded for a completely enclosed and secure module.

Features:

- ◆ Lockable secure lid design with pad lock hasp
- ◆ Constructed from 16 GA galvanized steel with customer specified powder coat finish available
- ◆ Completely welded seams
- ◆ Available with or without knockouts
- ◆ Complete with built-in cable management and fiber cassette mounting structure
- ◆ 110 block mounting positions
- ◆ Custom configurations are available

Dimensions as Shown

Length	Width	Depth
21"	14"	6"



Snake Tray® products are covered by one or more of the following patents: #6637704, #6637165, #6463704, #6460812, #6449912, #6361000, #6347493, #6019323, #6347493, #6449912, #6460812, #5953870, #5839702, #6926236, #7168212, #7959019. Foreign Patents: Australia #737813, #748160, #749488, #776643, #776644. Canada #2251732, #2319624, #2303081, #2396792. Japan #3723224. Mexico #204995, #229386, #220889. Europe #1012938, 1012937. Other Patents Pending.

CABLE MANAGEMENT SOLUTIONS, INC.

CABLE MANAGEMENT AND POWER DISTRIBUTION

291 SKIP LANE ♦ BAY SHORE, NEW YORK 11706 USA ♦ TEL: (800)308-6788 (631)674-0004

Document No. MKTG-0062 ♦ Revised August 2012 ♦ © 2012 Snake Tray

Made in the USA