

Snake Tray[®] Installation Instructions

101 SERIES SNAKE TRAY

- 1) Determine cable tray pathway layout
- 2) Layout trays according to the prescribed design drawings
- 3) Connect trays together using the supplied CB-12 or CB-10 connector bolts. (Fig. 7)
- 4) Secure tray to the floor through the built-in mounting rings with applicable fasteners at a minimum of 4'0" OC (Fig. 1)



Figure 1 - Attaching the 101 Series Snake Tray to the floor using CM-CA-38 anchor bolts

- 5) Changes of direction are accomplished by simply bending the tray by hand into the desired configurations (See Note 1)
- 6) Install cable along prescribed pathways

201 SERIES SNAKE TRAY

A) Installed overhead suspended from threaded rod

- 1) Determine cable tray pathway layout
- 2) Attach threaded rod to the building structure with approved fasteners at 4'-0" OC intervals. (Fig. 2)

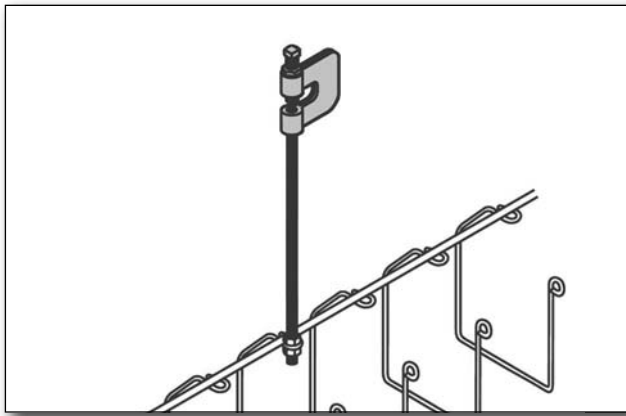


Figure 2 - Attaching Beam clamp to the building structure

- 3) Install top hex nut to the threaded rod at the appropriate elevations
- 4) Slide Snake Tray sections up onto threaded rod, landing the tray against the previously installed hex nut. This hex nut will align the tray to the threaded rod and sit flat against the wire loop "Snake Eyes". Complete the attachment by installing a flat washer and second hex nut on the underside of the Snake Eye. Tighten both hex nuts securely to lock tray to the threaded rod. (Fig. 3)



Figure 3 - Suspending Snake Tray from threaded rod using the "Snake Eyes"

- 5) Connect trays together using the CB-12 or CB-10 connector bolts. (Fig. 7)
- 6) Changes of direction are accomplished by simply bending the tray by hand into the desired configurations (See Note 1)
- 7) Install cable along prescribed pathways

B) Installed along a wall with WBN series brackets

- 1) Determine cable tray pathway layout
- 2) Secure Wall brackets to the wall surface using approved wall anchors at 4'-0" OC intervals.
- 3) Fasten Snake Tray sections to the wall brackets by aligning the Center spine of the tray with the WBN series bracket and connect using the included U-bolt. The U-bolts are to be securely tightened. (Fig. 4)
- 4) Connect trays together using the CB-12 or CB-10 connector bolts. (Fig. 7)
- 5) Changes of direction are accomplished by simply bending the tray by hand into the desired configurations (See note 1)
- 6) Install cable along the prescribed pathways



Figure 4 - Installing Snake Tray on a wall using WBN wall brackets.

C) Installed under raised floors ST series brackets

- 1) Determine cable tray pathway layout
- 2) Attach ST series brackets every 4'0" to the vertical floor pedestals at the correct elevations (Fig. 5)



Figure 5 - Securing the 201 Series Snake Tray under an access floor to the vertical pedestal base using the ST-201 bracket.

- 3) Fasten Snake Tray sections to the ST series brackets using the included U-bolt. U bolts are to be securely tightened.
- 4) Connect tray together using the CB-12 or CB-10 connector bolts. (Fig. 7)
- 5) Changes of direction are accomplished by simply bending the tray by hand into the desired configurations (See Note 1)
- 6) Install cable along the prescribed pathways

501 SERIES WALL SNAKE

- 1) Determine cable tray pathway layout
- 2) Layout trays according to the prescribed design drawings
- 3) Using an approved anchoring system inserted through the mounting rings, "Snake Eyes", Wall Snake is affixed to the wall every 4'-0" with out the need for additional wall brackets. (Fig. 6)



Figure 6 - Wall Snake attached directly to the wall using CM-501-CA anchor bolts

- 4) Connect tray together using either the CB-10 connector bolt or the CB-12 connector bolts. (Fig. 7)
- 5) Changes of direction are accomplished by simply bending the tray by hand into the desired configurations. (See Note 1)
- 6) Install cable along the prescribed pathways.

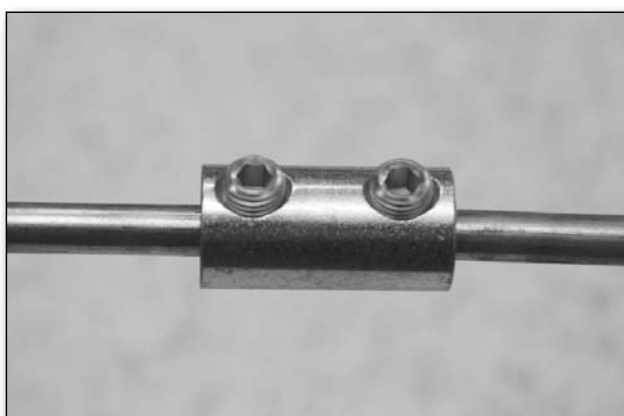


Figure 7 - Using a CB-10 (not pictured) or CB-12 (pictured) Universal connector bolt, two sections of Snake Tray are joined together

Note (1)

HOW TO BEND SNAKE TRAY

Snake Tray sections are to be bent using the following method:

Work off a sturdy, level surface. This helps keep the tray bending on one axis. Trying to complete the bend free hand without a level surface will lead to an unprofessional looking bend and the possibility of another bend on a second axis. (Fig. 8)



Figure 8

By using the surface as a guide, make the bend in small increments instead of one large bend. This allows for a smooth, controllable bend. Use your knee as a pivot point to give the bend a uniform appearance.

Sweep Right or Left:

With the Snake Tray resting on the floor place your knee between the 4-inch ribs, bend a few degrees, move your knee to the next segment and repeat the process on each subsequent section until sweep is completed. (Fig. 9)



Figure 9

Sweep Up:

Rest the Snake Tray on the floor and use your hand to make incremental bends a few degrees per 4-inch segment until the sweep is complete. (Fig. 10)

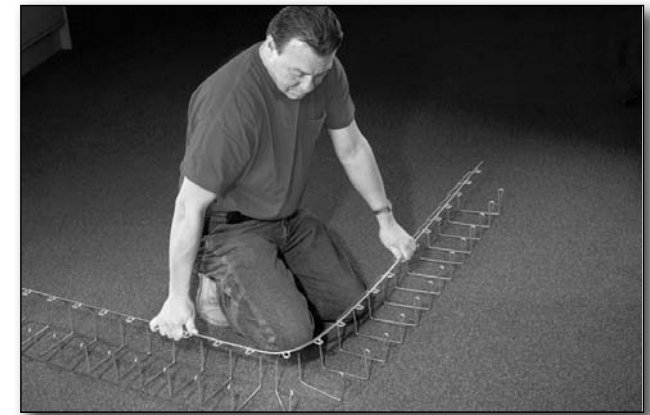


Figure 10

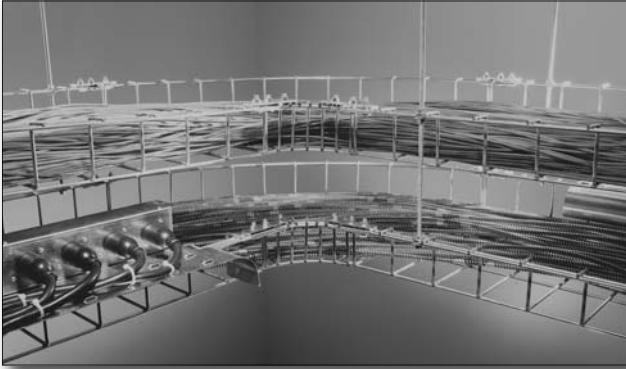
Sweep Down:

Turn the Snake Tray upside down, with the spine resting on the floor, trap the spine on the floor with your hand or foot, and bend a few degrees per segment. Keep the bends shallow enough to prevent the ribs from closing on each other. Down sweeps are smoother and have larger radii. (Fig. 11)



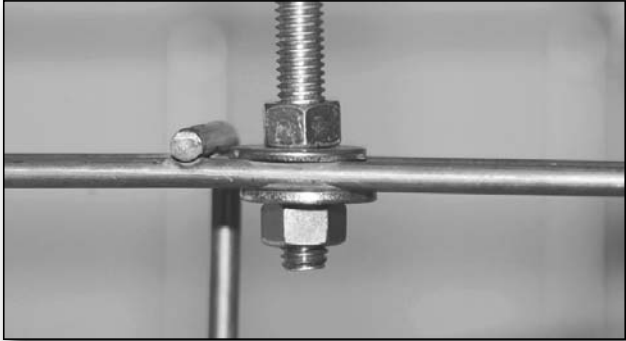
Figure 11

CM 801 Mega Snake™ Installation Instructions



To suspend Mega Snake™ or hang additional accessories from Mega Snake:

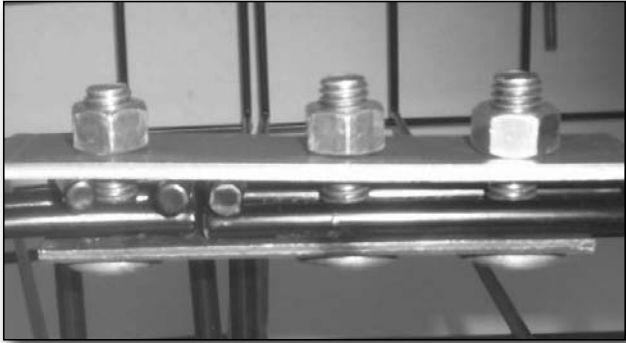
Mega Snake (CM 801 Series) has built-in Snake Rails™ used to secure 3/8" threaded rod, supported 48" to 60" OC as per EIA/TIA recommendations, to suspend the tray from above as well as mounting accessories to the tray system. Thread the upper nut to the desired installation height for the Mega Snake tray system. Next slide a flat washer on the threaded rod followed by the Mega Snake tray section. Install a lower flat washer and nut below the Mega Snake and tighten.



To connect the sections of Mega Snake™ together:

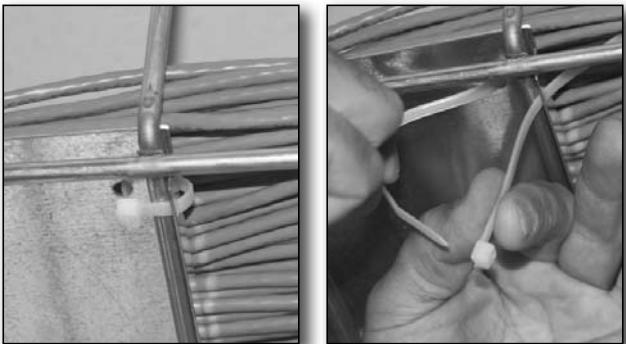
Mega Snake straights, turns or intersections are joined together using the Mega Snake splice kit (Part number CM 801-18-SP or CM 801-24-SP). This kit provides you with a splice that mounts to the Snake Rail™ on both side of the tray system.

To install simply align the tray sections and install the bottom splice plate with weld studs through the two tray sections. Install the upper splice plate over the studs and secure with supplied nuts.



To exit cable from Mega Snake™ (installing a turnout):

At the beginning or termination of a run of Mega Snake cable tray, a Mega Snake turn out should be installed to maintain the bend radius of all cables entering or exiting the tray system. To install a turnout, place the unit over the last wire in the tray system and index it on the second wire in the tray. You would then install four cables ties, two on each of the outer sides of the turnout, by placing them through the holes punched in the turnout and going around the wires of the tray as shown below. Complete the installation by drawing the ties tight and trimming off excess material.

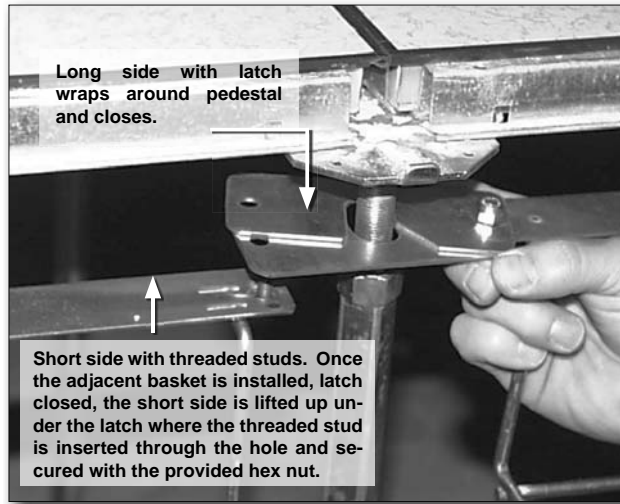


Snake Canyon® Latch Loc Plus Installation Instructions



Install riser tube onto existing pedestal by snapping the tube over the pedestal and adjust to the correct height.
Note: The Latch LOC basket will sit on top of the riser not the adjuster nut as shown in the photo below.

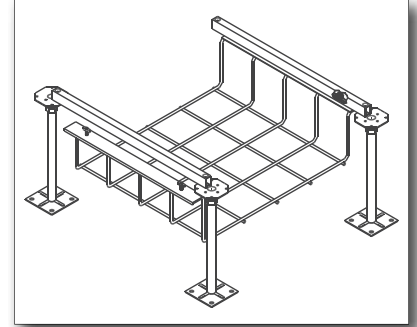
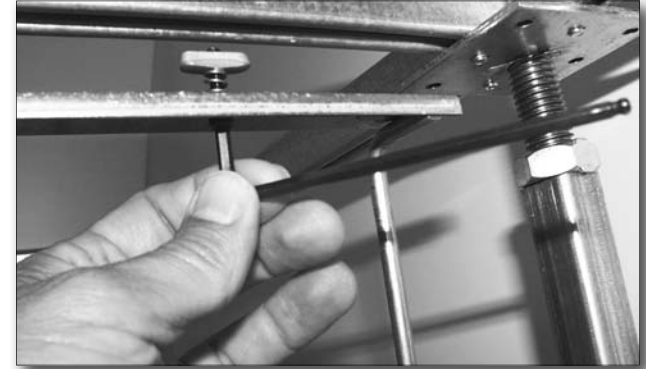
Snake Canyon® Latch Loc Plus Installation Instructions Continued . . .



The next basket is installed 180 degrees to the adjacent basket, and then the next again 180 degrees to the last...

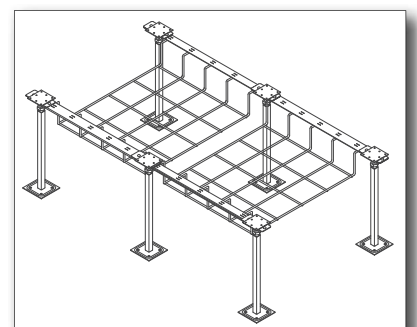
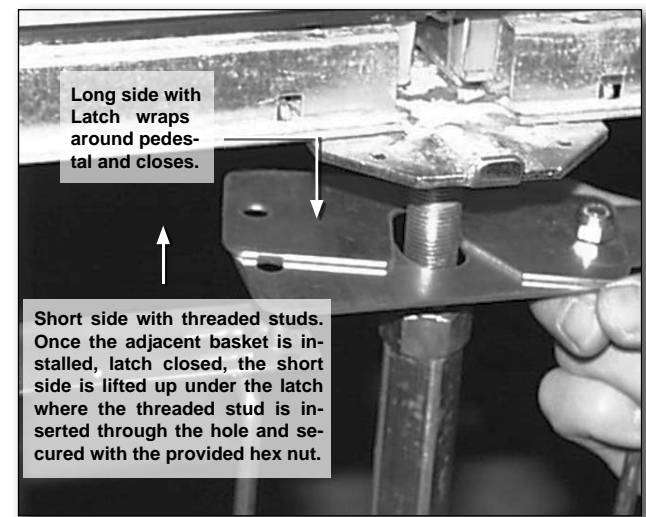
- 1) Remove access floor tiles from the cable pathway.
- 2) Install pedestal riser onto existing floor stringer
- 3) Open pedestal clamps on Snake Canyon 90 degrees to the stringer.
- 4) Insert Snake Canyon short side stringer with screw studs under access floor between floor pedestals.
- 5) Insert Snake Canyon long side stringer with pedestal clamp under access floor and then slide pedestal clamps around floor pedestals above the riser tube.
- 6) Close pedestal clamps around the floor pedestals to support Snake Canyon.
- 7) Install one P/N PB-101 Pedestal Clamp above adjuster nut on the floor pedestal at termination end of cable pathway, position over the threaded stud on the Snake Canyon and secure with nut.
- 8) Install nut and bolt on termination end of Snake Canyon to secure long stringer pedestal clamp.
- 9) Rotate next section of Snake Canyon 180 degrees and repeat Items 3, 4, 5 and 6. The stringer pedestal clamp from the first Snake Canyon installed will now attach to the threaded stud of the second section. Also, the threaded stud of the first section will attach to the stringer pedestal clamp of the second section.
- 10) Repeat this procedure turning each section 180 degrees to the last section installed until the Snake Canyon installation is completed.
- 11) On the last section of Snake Canyon, install one P/N PB-101 Pedestal Clamp and one nut and screw as described in Item 6 above to support the end of the tray.
- 12) If you need assistance, call toll free to 800-308-6788 for technical assistance.

Snake Canyon® Cam Loc Installation Instructions



- 1) Remove access floor tiles from the cable pathway.
- 2) Align CAM's parallel to the stringers, and allow at least 1/4" of thread to show on the studs
- 3) Insert Snake Canyon under access floor between floor pedestals.
- 4) Align Snake Canyon with the stringers.
- 5) Lift Snake Canyon under stringers allowing CAM's to interface with the slot under stringer.
- 6) Using a 9/64" allen wrench, tighten stud to engage CAM's
- 7) Each stud shall be tightened to ensure proper alignment and mechanical connection to the floor stringer
- 8) Repeat this procedure until the Snake Canyon system installation is completed.
- 9) If you need assistance, call toll free to 800-308-6788 for technical assistance.

Snake Canyon® Latch Loc Installation Instructions



The next basket is installed 180 degrees to the adjacent basket, and then the next again 180 degrees to the last...

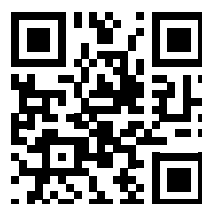
- 1) Remove access floor tiles from the cable pathway.
- 2) Open pedestal clamps on Snake Canyon 90 degrees to the stringer.
- 3) Insert Snake Canyon short side stringer with screw studs under access floor between floor pedestals.
- 4) Insert Snake Canyon long side stringer with pedestal clamp under access floor and then slide pedestal clamps around floor pedestals above the adjuster nuts.
- 5) Close pedestal clamps around the floor pedestals to support Snake Canyon.
- 6) Install one P/N PB-101 Pedestal Clamp above adjuster nut on the floor pedestal at termination end of cable pathway, Position over the threaded stud on the Snake Canyon and secure with nut.
- 7) Install nut and bolt on termination end of Snake Canyon to secure long stringer pedestal clamp.
- 8) Rotate next section of Snake Canyon 180 degrees and repeat Items 2,3,4 & 5. The stringer pedestal clamp from the first Snake Canyon installed will now attach to the threaded stud of the second section. Also, the threaded stud of the first section will attach to the stringer pedestal clamp of the second section.
- 9) Repeat this procedure turning each section 180 degrees to the last section installed until the Snake Canyon installation is completed.
- 10) On the last section of Snake Canyon, install one P/N PB-101 Pedestal Clamp and one nut and screw as described in Item 6 above to support the end of the tray.
- 11) If you need assistance, call toll free to 800-308-6788 for technical assistance.

Document No. MKTG-0010 ♦ Revised April 2014 ♦ © 2014 Snake Tray

Snake Tray® Installation Instructions



Snake Tray®
291 Skip Lane
Bay Shore NY 11706 USA
T: 800-308-6788 ♦ 631-674-0004
F: 800-881-6641 ♦ 631-674-0010
www.snaketray.com
MADE IN USA



Scan here for
Product Instructions.

Thank you for your Snake Tray Purchase. If you have questions or require additional information, please contact us at 800-308-6788.