

The Solar Snake Tray[®] Advantage!

EC&M
Product
OF THE
Year 11
Category Winner



Cable Management for Solar Installations



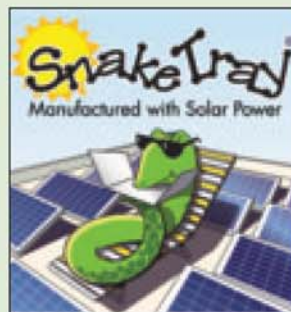
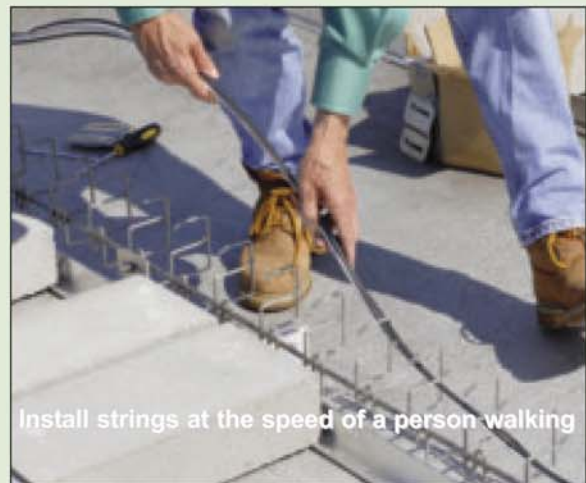
Solar Snake Tray®

Revolutionary hand-bendable cable pathways save on time and installation for superior cost savings!

Solar Snake Tray is the only weatherproof, hand-bendable cable conveyance that quickly and securely carries DC circuitry from solar panels to their terminations. Change directions easily by bending Solar Snake Tray with your own two hands.

- Built in mounting rings for infinite mounting options
- Trays connect together with a single connector for a 15-second bonded attachment tray to tray
- Patented "lobster trap" design ensures effortless outdoor cable installation while trapping and protecting the cables from rain, snow or hurricane force winds over 120 mph
- Solar Snake Tray maintains NEC compliance and eliminates the risk of using cable ties
- Available in Hot Dipped Galvanized and Stainless Steel for climate specific applications

Snake Tray products have an open architectural design to permit air to flow freely around the cables. This allows the copper conductors to carry their full capacity. When the conductors are in conduit, they must often be sized larger due to the heat retained by the closed environment of conduit. Solar Snake lowers cost as it lowers the amount of copper required.



Snake Tray is proud to be one of the first manufacturers in our industry to convert to 100% self-produced solar power!

Solar Mega Snake[®] for Pole Mount Installations

Pole Mount System That Can Span Distances Greater Than 30 Feet Between Poles!



Snake Tray's new Pole Mount System for field solar applications is a UL classified cable management system capable of spanning distances in excess of 30 feet!

- Designed with integrated supports
- Built-in mounting rail for attaching Combiner Boxes
- Optional seismic dampeners
- Nests together for economical shipping and easy material handling
- Available in Hot Dipped Galvanized and Stainless Steel for climate specific applications

Solar Messenger Snake Tray[®] for Pole Mounting

Clips on Messenger Wire Rope in Seconds!



Solar Messenger Snake Tray is available in a model that clips onto messenger wire rope for solar field installations. No hardware required!

- Ideal for long distances
- Quickly clips onto the messenger wire rope
- No tools or hardware required
- Nests together for economical shipping and easy material handling
- Available in Hot Dipped Galvanized and Stainless Steel for climate specific applications

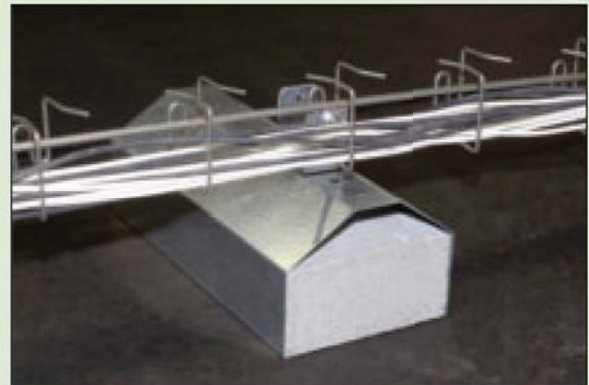
Solar Snake Charmer[®] Cable Manager



This is the long awaited solution for inspectors' request to get connectors and cables out of water and snow on rooftops. Solar Snake Charmer snaps into place under the panel to carry connectors safely and securely at the rear of the panel.

Snake Foot[®] Ballasted Roof Mount Anchor for Cable Trays and Conduit

Snake Tray's Snake Foot ballasted roof mount anchor uses common cement block ballast to support Solar Snake Tray cable tray and conduit to carry PV cables from solar arrays to combiners boxes and inverters. Snake Foot is also available with a strut mount system as well as many custom brackets to attach to virtually any roof top ballasted component. Padding on base protects roof membranes.



Solar Snake Tray[®] Combiner Box



This self ballasted combiner box for roof mount offers a cost effective solution for managing the electrical terminations.

- Self-ballasted with recycled rubber feet to protect roof membranes (No attachment to the roof required)
- Weather tight to NEMA 4, 4X, 12, and 13
- UV protected composite

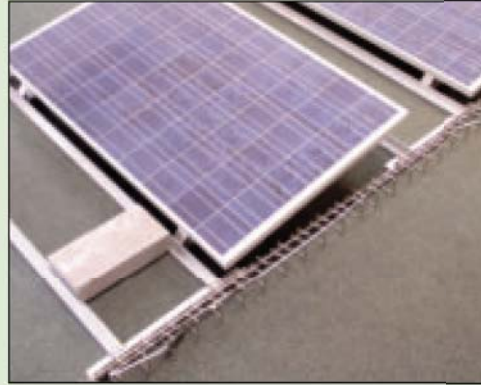
Snake Tray[®] Solar Racks

Snake Tray[®] Solar Racks - Ballasted Racks for Flat Roofs

Snake Tray Solar Rack's adjustable feature locks solar panels in place and secures the panels from hurricane force winds over 120 mph.

- Roof membrane is never pierced nor compromised for installation. Effective self-ballasting design holds in place for hurricane force winds.
- Quick assembly with stainless steel hardware.
- Adjustability allows locked-in fit for most solar panel brands and models.
- Knock down design and lightweight for easy handling on the roof.

* All rooftop applications must be verified for structural integrity in all situations. Local building codes must be checked.



Combines all-weather aluminum construction with a self-ballasting design for flat roofs to maintain weathertight roof membrane because no roof attachment is required.

Snake Tray[®] Solar Racks - Dual Panel Utility Grade Pole Mounted System

Utility grade dual panel pole mount system to accommodate municipal and private solar installations mounted on existing or dedicated utility poles. Developed in conjunction with state of the art micro-inverters which allow 2.5 times more solar power captured from a single pole site.



Snake Tray[®] Solar Racks - Interface Plates

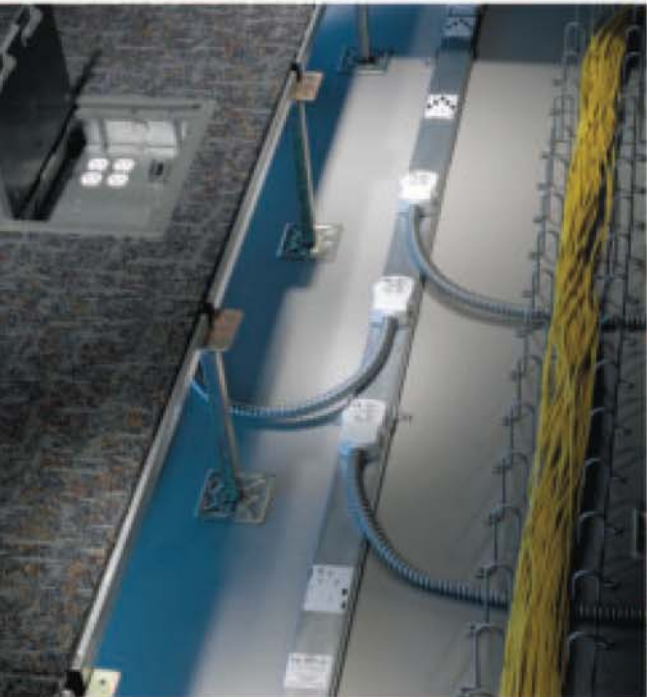
Snake Tray manufactures a complete array of interface plates to attach Solar Snake Tray to any manufacturer of solar mounting racks for ground mount or roof mount, tracking or fixed application.



The Snake Tray® Advantage

Snake Tray has revolutionized cable management, power distribution and airflow management with a stream of innovative products designed to install quickly, reduce labor and material costs and drive down the total cost of construction.

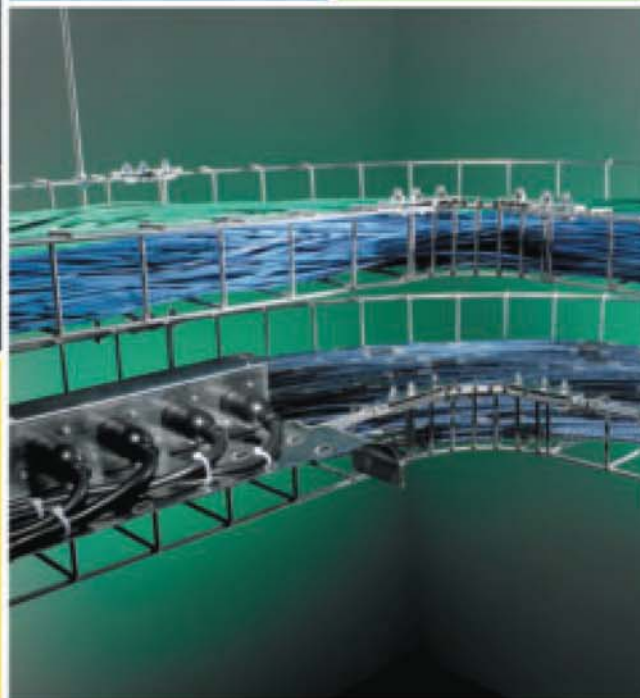
Snake Tray substantially reduces on-site install time to cut labor costs!



Snake Bus®

Snake Bus is green power distribution for access floors that is pre-configured for quick installations, moves and changes. Flexible power for workstations, call centers, trading desks and data centers.

Snake Canyon®
Snake Canyon is the fastest-to-install modular cable tray system for access floors. Its unique patented mounting system Cam-Loc and Latch-Loc require no additional hardware and installs in a fraction of the time compared with traditional cable trays. Can integrate with any access floor.



Mega Snake™

Mega Snake, high capacity overhead cable tray, comes in pre-manufactured sections to make it the fastest-installing cable tray in today's market. Mega Snake's patented mounting rail allows for a two-point suspension and can easily accommodate power modules and other accessories.



Snake Air®

Snake Air airflow managers for data centers and workstations offer a cost effective way to manage airflow to protect sensitive equipment from overheating and to conserve energy. There are Snake Air models for access floors, equipment racks and network switches.

Snake Tray® products are covered by one or more of the following patents: #6,637,704, #6,637,165, #6,463,704, #6,460,812, #6,449,912, #6,361,000, #6,347,493, #6,019,323, #5,953,870, #5,839,702, #6,926,236, #6,347,493, and #7,168,212. Other US and Foreign Patents Pending.

Snake Tray®

291 Skip Lane
Bay Shore, NY 11706 USA
Tel: 800-308-6788/631-674-0004
Fax: 800-881-6641/631-674-0010
www.snaketray.com

© Copyright 2011 Snake Tray

Volume II