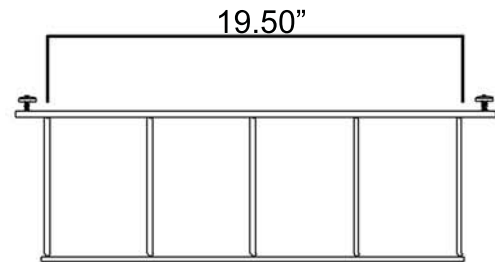
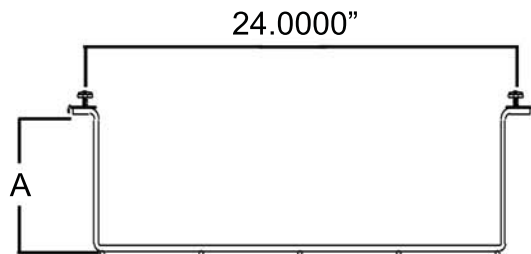
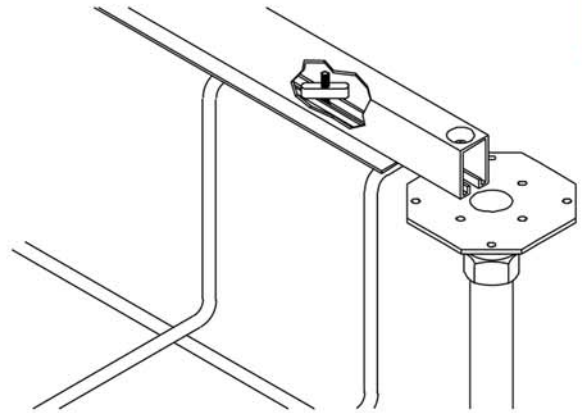
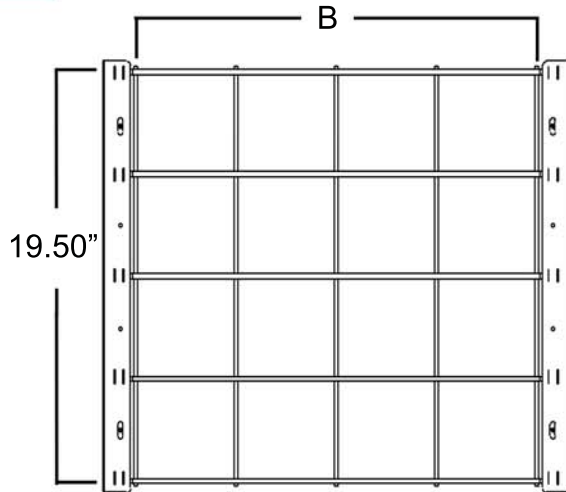




# 301 Series - Cam-Loc Snake Canyon®



Part. No.	Loading Dimensions		Cable Capacity		Weight	Finish
	Depth (A)	Width (B)	Physical Volume			
CM 301-2-CAM	2"	22"	44 si	470	4½ #	PG/PC
CM 301-4-CAM	3"	22"	88 si	940	5½ #	PG/PC
CM 301-6-CAM	5"	22"	132 si	1400	6½ #	PG/PC
CM 301-8-CAM	6"	22"	176 si	1880	8 #	PG/PC
CM 301-12-CAM	12"	22"	264 si	2820	9½ #	PG/PC

50% fill as per NEC Article 392.9B  
0.25" OD

Available finishes: Pregalvanized and powder coat

Snake Canyon® Cam-Loc is for use on any general installation or where adjacent tiles cannot be removed or when bridging under equipment racks and cabinets. Snake Canyon® can be used on any stringer type that utilizes an open bottom box type design. The spring tensioned cam is inserted inside the stringer through the bottom slot and tightened with an allen wrench. The tightened cam creates a mechanical connection between the Snake Canyon® basket and raised floor stringer. Available in straight sections, turning components and half sections.

For drawings of specific models, additional sizes or accessories please call us at 800.308.6788.

***\*Floor type must be identified prior to order***

www.snaketray.com

800.308.6788

Made in the USA